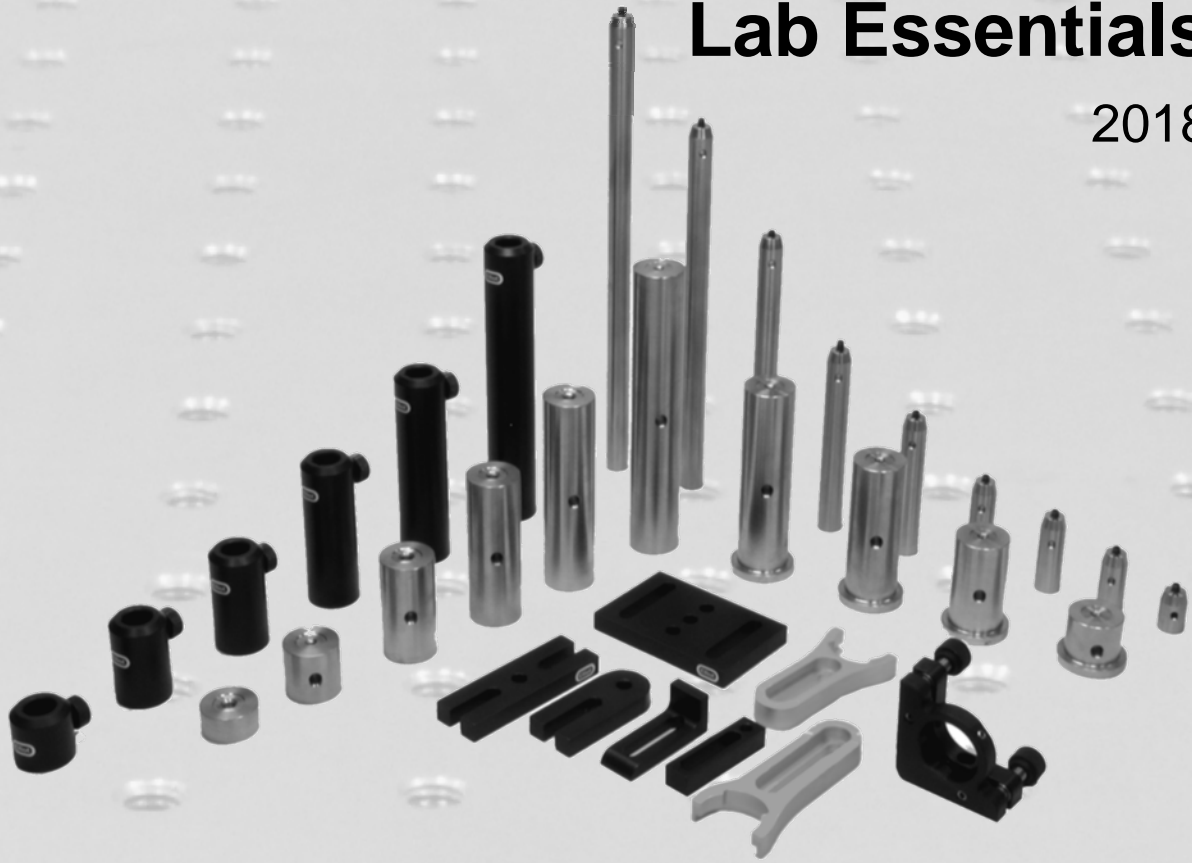


Lab Essentials

2018



About Elliot Scientific

Elliot Scientific serves the UK and Ireland's academic research, commercial, and industrial communities as a major supplier of equipment dedicated to the science of light.

Lasers, LEDs and other high-power light sources, optical fibre and custom optics, positioning systems and opto-mechanics, instrumentation for cryogenic and magnetic research, as well as probes and sensors, are just some of the technologies we source from leading manufacturers.

We also design and build our own ranges that are marketed globally under the Elliot|Martock and Elliot Scientific brands. These include award-winning Optical Tweezers, world-renowned flexure stages, and class-leading micropositioners, fibre positioning components, automated alignment systems, and waveguide manipulators among others.

All of our customers - from academic institutions and government agencies through to commercial researchers and industry - are provided with a top-quality service backed up by solid technical support from our knowledgeable team.



Solution Science for Research and Industry

We pride ourselves in offering *Solution Science for Research and Industry*. We employ experienced people to help you match equipment to project for the perfect union.

Elliot Scientific's scientists and engineers will assist you with your product search or application, and offer accurate and balanced advice. The team have worked together for over a decade, bringing with them a huge amount of real-world know-how to help you achieve the desired result.

Our accounting and administration staff have also been recruited from the best to ensure that you are always served on-time and with integrity by the company.

Quality

We understand the need for continual improvement in services and traceability, both in distribution and manufacture, so our commitment to this ensures our standards are the highest in our industry.

Elliot Scientific has been ISO registered since 1993, gaining the latest BS EN ISO 9001:2015 accreditation in the summer of 2016.



Contents

Lab Essentials

| | |
|--|-----|
| Kinematic Mounts | 377 |
| High Precision Kinematic Mirror Mounts | 379 |
| Standard Kinematic Mirror Mounts | 390 |
| Locking Kinematic Mirror Mounts | 393 |
| Kinematic Component Mounts | 396 |
| Component Mounts | 403 |
| Pillars & Pedestal Posts | 405 |
| 1" Pillar Posts | 407 |
| 1" Pedestal Posts | 414 |
| Post Spacers | 418 |
| Post Clamps | 422 |
| Clamping Forks | 424 |
| ½" Posts, Holders & Bases | 426 |
| ½" Posts | 428 |
| ½" Post Holders | 438 |
| ½" Post Clamps | 444 |
| Bases | 447 |
| Table Clamps | 455 |
| Fixed Holders | 457 |
| Lens Mounts | 459 |
| Rotation Mount | 467 |
| Iris Diaphragms | 468 |
| Fixed Mirror Holders | 472 |
| Stackable Filter Holder | 475 |

Index

International Distributors

Kinematic Mounts

2018



Kinematic Mirror & Component Mounts: High Precision Kinematic Mirror Mounts

E911 Adjustable High Precision Mirror Mount Frame with 1" Optic Holder



- Nylon tipped clamping screw
- Excellent long term stability
- Engraved cross-hairs aid alignment
- Hex drive adjusters with removable knurled knobs
- M6 mounting holes (x 5) for on-axis post mounting
- User configurable left-hand or right-hand geometry
- Uses unique 0.25 μ m pitch with \sim 100 turns/inch thread
- Accepts interchangeable front plates for up to 4"/100 mm optics
- Rear optic loading for repeatable location of mirror face

The E910 Series kinematic mirror mounts consist of a precision frame with adjusters to which the user can fit different sizes of front plate to hold optics ranging from 1 inch/25 mm through to 4 inch/100 mm.

These mounts use the highest quality hand-lapped adjusters to provide smooth and accurate adjustment for critical laser and optical alignment. The 0.25 pitch (approx 100 TPI) threaded screws provide a very high degree of sensitivity and control, and complement the excellent long term stability of the base. Ease of use is enhanced by the provision of both a hex drive socket and a removable knurled knob.

Optics are loaded via the rear of the front plate, and the front face of the mirror locates against a mechanical datum. Thus the critical optical surface always locates in the same place irrespective of the thickness of the mirror substrate. A nylon tipped screw positively locks the mirror optic against two machined pads within the front plate.

Interchangeable front plates boost the versatility of these mounts as the same frame can accommodate a variety of optic sizes. Furthermore, on-line mirrors can be quickly replaced with alternative optics preloaded off-line into additional front plates.

Specifications

| | |
|--------------------|--|
| Mirror size | Interchangeable front plate for 1"/25 mm optics (Supplied) |
| Angular range | \pm 4.5° |
| Angular resolution | 2.5 arc seconds |
| Configuration | Right-hand or left-hand user changeable |

Options

- Custom configurations
- Interchangeable front plate optic holders (see below)
- E200 market-leading adjusters available separately
- Mirror mounts for 1" / 25 mm, 2" / 50 mm, 3" / 75 mm or 4" / 100 mm optics (see below)

Notes

- E910 Precision frame with adjusters - No front plate
- Front plate optic holders:
 - EFP911 1 inch/25 mm front plate optic holder
 - EFP912 2 inch/50 mm front plate optic holder
 - EFP913 3 inch/75 mm front plate optic holder
 - EFP914 4 inch/100 mm front plate optic holder
- E912 Precision frame with adjusters and 2 inch/50 mm front plate
- E913 Precision frame with adjusters and 3 inch/75 mm front plate
- E914 Precision frame with adjusters and 4 inch/100 mm front plate

Kinematic Mirror & Component Mounts: High Precision Kinematic Mirror Mounts

E912 Adjustable High Precision Mirror Mount Frame with 2" Optic Holder



- Nylon tipped clamping screw
- Excellent long term stability
- Engraved cross-hairs aid alignment
- Hex drive adjusters with removable knurled knobs
- M6 mounting holes (x 5) for on-axis post mounting
- User configurable left-hand or right-hand geometry
- Uses unique 0.25 μm pitch with ~ 100 turns/inch thread
- Accepts interchangeable front plates for up to 4"/100 mm optics
- Rear optic loading for repeatable location of mirror face

The E910 Series kinematic mirror mounts consist of a precision frame with adjusters to which the user can fit different sizes of front plate to hold optics ranging from 1 inch/25 mm through to 4 inch/100 mm.

These mounts use the highest quality hand-lapped adjusters to provide smooth and accurate adjustment for critical laser and optical alignment. The 0.25 pitch (approx 100 TPI) threaded screws provide a very high degree of sensitivity and control, and complement the excellent long term stability of the base. Ease of use is enhanced by the provision of both a hex drive socket and a removable knurled knob.

Optics are loaded via the rear of the front plate, and the front face of the mirror locates against a mechanical datum. Thus the critical optical surface always locates in the same place irrespective of the thickness of the mirror substrate. A nylon tipped screw positively locks the mirror optic against two machined pads within the front plate.

Interchangeable front plates boost the versatility of these mounts as the same frame can accommodate a variety of optic sizes. Furthermore, on-line mirrors can be quickly replaced with alternative optics preloaded off-line into additional front plates.

Specifications

| | |
|--------------------|--|
| Mirror size | Interchangeable front plate for 2"/50 mm optics (Supplied) |
| Angular range | $\pm 4.5^\circ$ |
| Angular resolution | 2.5 arc seconds |
| Configuration | Right-hand or left-hand user changeable |

Options

Custom configurations

Interchangeable front plate optic holders (see below)

E200 market-leading adjusters available separately

Mirror mounts for 1" / 25 mm, 2" / 50 mm, 3" / 75 mm or 4" / 100 mm optics (see below)

Notes

E910 Precision frame with adjusters - No front plate

Front plate optic holders:

EFP911 1 inch/25 mm front plate optic holder

EFP912 2 inch/50 mm front plate optic holder

EFP913 3 inch/75 mm front plate optic holder

EFP914 4 inch/100 mm front plate optic holder

E911 Precision frame with adjusters and 1 inch/25 mm front plate

E913 Precision frame with adjusters and 3 inch/75 mm front plate

E914 Precision frame with adjusters and 4 inch/100 mm front plate

Kinematic Mirror & Component Mounts: High Precision Kinematic Mirror Mounts

E913 Adjustable High Precision Mirror Mount Frame with 3" Optic Holder



- Nylon tipped clamping screw
- Excellent long term stability
- Engraved cross-hairs aid alignment
- Hex drive adjusters with removable knurled knobs
- M6 mounting holes (x 5) for on-axis post mounting
- User configurable left-hand or right-hand geometry
- Uses unique 0.25 μm pitch with ~ 100 turns/inch thread
- Accepts interchangeable front plates for up to 4"/100 mm optics
- Rear optic loading for repeatable location of mirror face

The E910 Series kinematic mirror mounts consist of a precision frame with adjusters to which the user can fit different sizes of front plate to hold optics ranging from 1 inch/25 mm through to 4 inch/100 mm.

These mounts use the highest quality hand-lapped adjusters to provide smooth and accurate adjustment for critical laser and optical alignment. The 0.25 pitch (approx 100 TPI) threaded screws provide a very high degree of sensitivity and control, and complement the excellent long term stability of the base. Ease of use is enhanced by the provision of both a hex drive socket and a removable knurled knob.

Optics are loaded via the rear of the front plate, and the front face of the mirror locates against a mechanical datum. Thus the critical optical surface always locates in the same place irrespective of the thickness of the mirror substrate. A nylon tipped screw positively locks the mirror optic against two machined pads within the front plate.

Interchangeable front plates boost the versatility of these mounts as the same frame can accommodate a variety of optic sizes. Furthermore, on-line mirrors can be quickly replaced with alternative optics preloaded off-line into additional front plates.

Specifications

| | |
|--------------------|--|
| Mirror size | Interchangeable front plate for 3"/75 mm optics (Supplied) |
| Angular range | $\pm 4.5^\circ$ |
| Angular resolution | 2.5 arc seconds |
| Configuration | Right-hand or left-hand user changeable |

Options

Custom configurations

Interchangeable front plate optic holders (see below)

E200 market-leading adjusters available separately

Mirror mounts for 1" / 25 mm, 2" / 50 mm, 3" / 75 mm or 4" / 100 mm optics (see below)

Notes

E910 Precision frame with adjusters - No front plate

Front plate optic holders:

EFP911 1 inch/25 mm front plate optic holder

EFP912 2 inch/50 mm front plate optic holder

EFP913 3 inch/75 mm front plate optic holder

EFP914 4 inch/100 mm front plate optic holder

E911 Precision frame with adjusters and 1 inch/25 mm front plate

E912 Precision frame with adjusters and 2 inch/50 mm front plate

E914 Precision frame with adjusters and 4 inch/100 mm front plate

Kinematic Mirror & Component Mounts: High Precision Kinematic Mirror Mounts

E914 Adjustable High Precision Mirror Mount Frame with 4" Optic Holder



- Nylon tipped clamping screw
- Excellent long term stability
- Engraved cross-hairs aid alignment
- Hex drive adjusters with removable knurled knobs
- M6 mounting holes (x 5) for on-axis post mounting
- User configurable left-hand or right-hand geometry
- Uses unique 0.25 μm pitch with ~ 100 turns/inch thread
- Accepts interchangeable front plates for up to 4"/100 mm optics
- Rear optic loading for repeatable location of mirror face

The E910 Series kinematic mirror mounts consist of a precision frame with adjusters to which the user can fit different sizes of front plate to hold optics ranging from 1 inch/25 mm through to 4 inch/100 mm.

These mounts use the highest quality hand-lapped adjusters to provide smooth and accurate adjustment for critical laser and optical alignment. The 0.25 pitch (approx 100 TPI) threaded screws provide a very high degree of sensitivity and control, and complement the excellent long term stability of the base. Ease of use is enhanced by the provision of both a hex drive socket and a removable knurled knob.

Optics are loaded via the rear of the front plate, and the front face of the mirror locates against a mechanical datum. Thus the critical optical surface always locates in the same place irrespective of the thickness of the mirror substrate. A nylon tipped screw positively locks the mirror optic against two machined pads within the front plate.

Interchangeable front plates boost the versatility of these mounts as the same frame can accommodate a variety of optic sizes. Furthermore, on-line mirrors can be quickly replaced with alternative optics preloaded off-line into additional front plates.

Specifications

| | |
|--------------------|---|
| Mirror size | Interchangeable front plate for 4"/100 mm optics (Supplied) |
| Angular range | $\pm 4.5^\circ$ |
| Angular resolution | 2.5 arc seconds |
| Configuration | Right-hand or left-hand user changeable |

Options

Custom configurations

Interchangeable front plate optic holders (see below)

E200 market-leading adjusters available separately

Mirror mounts for 1" / 25 mm, 2" / 50 mm, 3" / 75 mm or 4" / 100 mm optics (see below)

Notes

E910 Precision frame with adjusters - No front plate

Front plate optic holders:

EFP911 1 inch/25 mm front plate optic holder

EFP912 2 inch/50 mm front plate optic holder

EFP913 3 inch/75 mm front plate optic holder

EFP914 4 inch/100 mm front plate optic holder

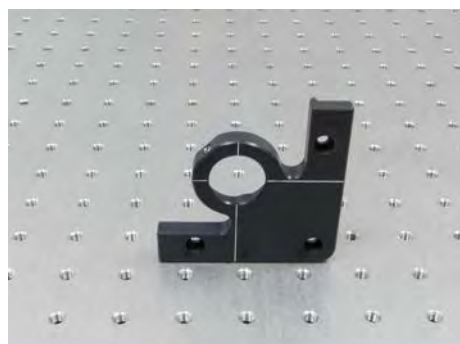
E911 Precision frame with adjusters and 1 inch/25 mm front plate

E912 Precision frame with adjusters and 2 inch/50 mm front plate

E913 Precision frame with adjusters and 3 inch/75 mm front plate

Kinematic Mirror & Component Mounts: High Precision Kinematic Mirror Mounts

EFP911 Interchangeable 1" (25 mm) Front Plate Optic Holder



- Nylon tipped clamping screw
- Excellent long term stability
- Engraved cross-hairs aid alignment
- User configurable left-hand or right-hand geometry
- Rear optic loading for repeatable location of mirror face
- Range of front plates for 1"/25 mm, 2"/50 mm, 3"/75 mm or 4"/100 mm optics
- Interchangeable front plate optic holders for E910 Series High Precision Mirror Mounts

The EFP91n Series front plate optic holders are for use with the E910 Series mirror mount frames. The user can fit different sizes of front plate to hold optics ranging from 1 inch/25 mm through to 4 inch/100 mm. The interchangeable front plates greatly boost the versatility of these mounts as the same frame can accommodate a variety of mirror sizes. Furthermore, on-line optics can be quickly replaced with alternative mirrors that have previously been preloaded off-line into additional front plates.

Optics are loaded via the rear of the front plate, and the front face of the mirror locates against a mechanical datum. Thus the critical optical surface always locates in the same place irrespective of the thickness of the mirror substrate. A nylon tipped screw positively locks the mirror optic against two machined pads within the front plate.

Specifications

| | |
|--------------------|--|
| Mirror size | Interchangeable front plate for 1"/25 mm optics (Supplied) |
| Angular range | ± 4.5° |
| Angular resolution | 2.5 arc seconds |
| Configuration | Right-hand or left-hand user changeable |

Options

Custom configurations

Interchangeable front plate optic holders (see below)

E200 market-leading adjusters available separately

Mirror mounts for 1" / 25 mm, 2" / 50 mm, 3" / 75 mm or 4" / 100 mm optics (see below)

Notes

E910 Precision frame with adjusters - No front plate

Front plate optic holders:

EFP912 2 inch/50 mm front plate optic holder

EFP913 3 inch/75 mm front plate optic holder

EFP914 4 inch/100 mm front plate optic holder

E911 Precision frame with adjusters and 1 inch/25 mm front plate

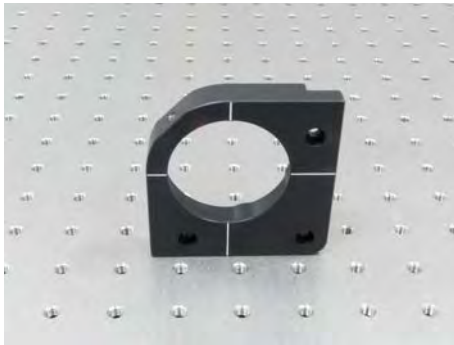
E912 Precision frame with adjusters and 2 inch/50 mm front plate

E913 Precision frame with adjusters and 3 inch/75 mm front plate

E914 Precision frame with adjusters and 4 inch/100 mm front plate

Kinematic Mirror & Component Mounts: High Precision Kinematic Mirror Mounts

EFP912 Interchangeable 2" (50 mm) Front Plate Optic Holder



- Nylon tipped clamping screw
- Excellent long term stability
- Engraved cross-hairs aid alignment
- User configurable left-hand or right-hand geometry
- Rear optic loading for repeatable location of mirror face
- Range of front plates for 1"/25 mm, 2"/50 mm, 3"/75 mm or 4"/100 mm optics
- Interchangeable front plate optic holders for E910 Series High Precision Mirror Mounts

The EFP91n Series front plate optic holders are for use with the E910 Series mirror mount frames. The user can fit different sizes of front plate to hold optics ranging from 1 inch/25 mm through to 4 inch/100 mm. The interchangeable front plates greatly boost the versatility of these mounts as the same frame can accommodate a variety of mirror sizes. Furthermore, on-line optics can be quickly replaced with alternative mirrors that have previously been preloaded off-line into additional front plates.

Optics are loaded via the rear of the front plate, and the front face of the mirror locates against a mechanical datum. Thus the critical optical surface always locates in the same place irrespective of the thickness of the mirror substrate. A nylon tipped screw positively locks the mirror optic against two machined pads within the front plate.

Specifications

| | |
|--------------------|--|
| Mirror size | Interchangeable front plate for 2"/50 mm optics (Supplied) |
| Angular range | ± 4.5° |
| Angular resolution | 2.5 arc seconds |
| Configuration | Right-hand or left-hand user changeable |

Options

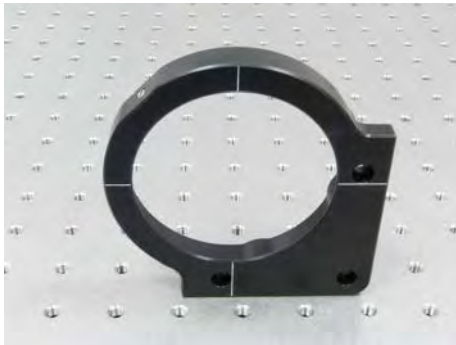
- Custom configurations
- Interchangeable front plate optic holders (see below)
- E200 market-leading adjusters available separately
- Mirror mounts for 1" / 25 mm, 2" / 50 mm, 3" / 75 mm or 4" / 100 mm optics (see below)

Notes

- E910 Precision frame with adjusters - No front plate
- Front plate optic holders:
 - EFP911 1 inch/25 mm front plate optic holder
 - EFP913 3 inch/75 mm front plate optic holder
 - EFP914 4 inch/100 mm front plate optic holder
- E911 Precision frame with adjusters and 1 inch/25 mm front plate
- E912 Precision frame with adjusters and 2 inch/50 mm front plate
- E913 Precision frame with adjusters and 3 inch/75 mm front plate
- E914 Precision frame with adjusters and 4 inch/100 mm front plate

Kinematic Mirror & Component Mounts: High Precision Kinematic Mirror Mounts

EFP913 Interchangeable 3" (75 mm) Front Plate Optic Holder



- Nylon tipped clamping screw
- Excellent long term stability
- Engraved cross-hairs aid alignment
- User configurable left-hand or right-hand geometry
- Rear optic loading for repeatable location of mirror face
- Range of front plates for 1"/25 mm, 2"/50 mm, 3"/75 mm or 4"/100 mm optics
- Interchangeable front plate optic holders for E910 Series High Precision Mirror Mounts

The EFP91n Series front plate optic holders are for use with the E910 Series mirror mount frames. The user can fit different sizes of front plate to hold optics ranging from 1 inch/25 mm through to 4 inch/100 mm. The interchangeable front plates greatly boost the versatility of these mounts as the same frame can accommodate a variety of mirror sizes. Furthermore, on-line optics can be quickly replaced with alternative mirrors that have previously been preloaded off-line into additional front plates.

Optics are loaded via the rear of the front plate, and the front face of the mirror locates against a mechanical datum. Thus the critical optical surface always locates in the same place irrespective of the thickness of the mirror substrate. A nylon tipped screw positively locks the mirror optic against two machined pads within the front plate.

Specifications

| | |
|--------------------|--|
| Mirror size | Interchangeable front plate for 3"/75 mm optics (Supplied) |
| Angular range | ± 4.5° |
| Angular resolution | 2.5 arc seconds |
| Configuration | Right-hand or left-hand user changeable |

Options

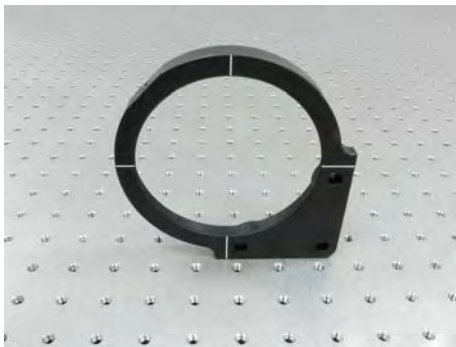
- Custom configurations
- Interchangeable front plate optic holders (see below)
- E200 market-leading adjusters available separately
- Mirror mounts for 1" / 25 mm, 2" / 50 mm, 3" / 75 mm or 4" / 100 mm optics (see below)

Notes

- E910 Precision frame with adjusters - No front plate
- Front plate optic holders:
 - EFP911 1 inch/25 mm front plate optic holder
 - EFP912 2 inch/50 mm front plate optic holder
 - EFP914 4 inch/100 mm front plate optic holder
- E911 Precision frame with adjusters and 1 inch/25 mm front plate
- E912 Precision frame with adjusters and 2 inch/50 mm front plate
- E913 Precision frame with adjusters and 3 inch/75 mm front plate
- E914 Precision frame with adjusters and 4 inch/100 mm front plate

Kinematic Mirror & Component Mounts: High Precision Kinematic Mirror Mounts

EFP914 Interchangeable 4" (100 mm) Front Plate Optic Holder



- Nylon tipped clamping screw
- Excellent long term stability
- Engraved cross-hairs aid alignment
- User configurable left-hand or right-hand geometry
- Rear optic loading for repeatable location of mirror face
- Range of front plates for 1"/25 mm, 2"/50 mm, 3"/75 mm or 4"/100 mm optics
- Interchangeable front plate optic holders for E910 Series High Precision Mirror Mounts

The EFP91n Series front plate optic holders are for use with the E910 Series mirror mount frames. The user can fit different sizes of front plate to hold optics ranging from 1 inch/25 mm through to 4 inch/100 mm. The interchangeable front plates greatly boost the versatility of these mounts as the same frame can accommodate a variety of mirror sizes. Furthermore, on-line optics can be quickly replaced with alternative mirrors that have previously been preloaded off-line into additional front plates.

Optics are loaded via the rear of the front plate, and the front face of the mirror locates against a mechanical datum. Thus the critical optical surface always locates in the same place irrespective of the thickness of the mirror substrate. A nylon tipped screw positively locks the mirror optic against two machined pads within the front plate.

Specifications

| | |
|--------------------|---|
| Mirror size | Interchangeable front plate for 4"/100 mm optics (Supplied) |
| Angular range | ± 4.5° |
| Angular resolution | 2.5 arc seconds |
| Configuration | Right-hand or left-hand user changeable |

Options

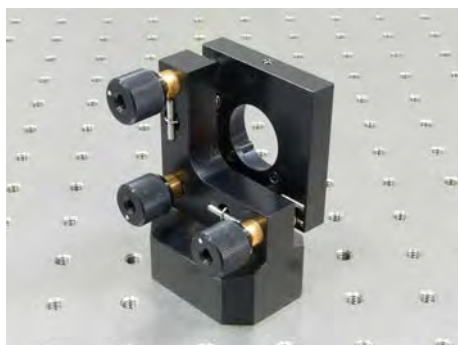
- Custom configurations
- Interchangeable front plate optic holders (see below)
- E200 market-leading adjusters available separately
- Mirror mounts for 1" / 25 mm, 2" / 50 mm, 3" / 75 mm or 4" / 100 mm optics (see below)

Notes

- E910 Precision frame with adjusters - No front plate
- Front plate optic holders:
 - EFP911 1 inch/25 mm front plate optic holder
 - EFP912 2 inch/50 mm front plate optic holder
 - EFP913 3 inch/75 mm front plate optic holder
- E911 Precision frame with adjusters and 1 inch/25 mm front plate
- E912 Precision frame with adjusters and 2 inch/50 mm front plate
- E913 Precision frame with adjusters and 3 inch/75 mm front plate
- E914 Precision frame with adjusters and 4 inch/100 mm front plate

Kinematic Mirror & Component Mounts: High Precision Kinematic Mirror Mounts

E901 High Precision L/H 25 mm (1") Mirror Mount



- M6 mounting holes (x 3)
- Nylon tipped clamping screw
- Excellent long term stability
- Soft mounting for optic protection
- 25 mm optic mounting (12.5 mm on request)
- Hex drive adjusters with removable knurled knobs
- Left-hand (E901) and right-hand (E902) versions
- Ultra-stable base with proven laser alignment performance
- Uses 0.25 μm pitch high-quality adjusters with ~ 100 tpi thread

The E900 series precision kinematic mirror mounts use the highest quality hand-lapped adjusters to provide smooth and accurate adjustment for critical laser and optical alignment. The 0.25 pitch (approx 100 TPI) threaded screws provide a very high degree of sensitivity and control, and complement the excellent long term stability of the base.

Ease of use is enhanced by the provision of both a hex drive socket and a removable knurled knob. A nylon tipped locking screw positively locates the mirror optic against two compliant pads which minimise the stress applied to the optical substrate.

To improve access in confined spaces, both left-hand (E901) and right-hand (E902) versions are available.

Specifications

| | |
|--------------------|---------------------|
| Mirror size | 1" / 25 mm diameter |
| Angular range | $\pm 7.5^\circ$ |
| Angular resolution | 0.001 $^\circ$ |

Variants

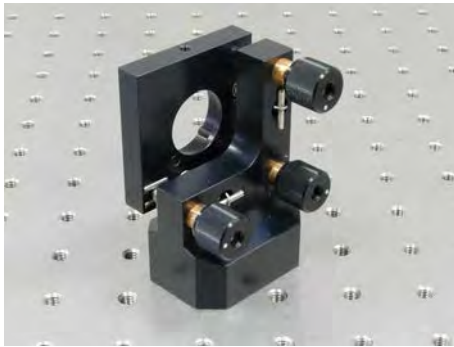
Right hand version
 12.5 mm optic mounting
 Custom configurations

Notes

E200 market-leading adjusters available separately

Kinematic Mirror & Component Mounts: High Precision Kinematic Mirror Mounts

E902 High Precision R/H 25 mm (1") Mirror Mount



- M6 mounting holes (x 3)
- Nylon tipped clamping screw
- Excellent long term stability
- Soft mounting for optic protection
- 25 mm optic mounting (12.5 mm on request)
- Hex drive adjusters with removable knurled knobs
- Left-hand (E901) and right-hand (E902) versions
- Ultra-stable base with proven laser alignment performance
- Uses 0.25 μm pitch high-quality adjusters with ~ 100 tpi thread

The E900 series precision kinematic mirror mounts use the highest quality hand-lapped adjusters to provide smooth and accurate adjustment for critical laser and optical alignment. The 0.25 pitch (approx 100 TPI) threaded screws provide a very high degree of sensitivity and control, and complement the excellent long term stability of the base.

Ease of use is enhanced by the provision of both a hex drive socket and a removable knurled knob. A nylon tipped locking screw positively locates the mirror optic against two compliant pads which minimise the stress applied to the optical substrate.

To improve access in confined spaces, both left-hand (E901) and right-hand (E902) versions are available.

Specifications

| | |
|--------------------|---------------------|
| Mirror size | 1" / 25 mm diameter |
| Angular range | $\pm 7.5^\circ$ |
| Angular resolution | 0.001 $^\circ$ |

Variants

- Right hand version
- 12.5 mm optic mounting
- Custom configurations

0

E200 market-leading adjusters available separately

Kinematic Mirror & Component Mounts: High Precision Kinematic Mirror Mounts

MDE320 25 mm (1") Ultra-fine Kinematic Mirror Mount



ELLIOT MARTOCK

- 25 mm optic mounting
- Angular resolution 0.1 arc secs
- Lockable coarse drive on adjusters
- Patented† mechanical lever system on adjusters

The MDE320 mount consists of a conventional kinematic mirror mount for 25 mm (1 inch) optics fitted with two MDE215 ultra-fine mirror mount adjusters.

The MDE215 adjusters used on the MDE320 mirror mount incorporate a patented mechanical lever system to achieve a linear sensitivity of 20 nm. This plus the ability to lock the coarse drive gives much improved precision of the mirror mount.

Specifications

| | |
|--------------------|---|
| Mirror size | 1" / 25 mm diameter |
| Angular resolution | 0.1 arc seconds |
| Adjusters | MDE215 Ultrafine Mirror Mount Adjuster, with coarse (lockable) and fine drive x 2 |

† Patent Nos. GB 2152616B & USA 4617833

Kinematic Mirror & Component Mounts: Standard Kinematic Mirror Mounts

KMP021 Standard ½" (12.5 mm) Kinematic Mirror Mount



- Angular range $\pm 4^\circ$
- Left or right-handed mounting
- Imperial and metric compatible
- Two M4-0.25 pitch hex drive adjusters

A quality ½" mirror mount for general laboratory applications. Clearance hole for imperial and metric mounting. Features M4-0.25 pitch adjusters with hex key drive. A nylon tipped set screw positively locks the optic in place. Stainless steel adjusters act on hardened inserts to ensure smooth movement even with small adjustments.

Specifications

| | |
|--------------------|---|
| Mirror size | ½" / 12.7 mm diameter |
| Angular range | $\pm 4^\circ$ |
| Angular resolution | 7 arc seconds |
| Configuration | Right-hand or left-hand |
| Base mounting | M4 (#8-32) counterbored mounting clearance hole |

Kinematic Mirror & Component Mounts: Standard Kinematic Mirror Mounts

KMP121 Standard 1" (25 mm) Kinematic Mirror Mount



- Angular range $\pm 4^\circ$
- Left or right-handed mounting
- Imperial and metric compatible
- $\frac{1}{4}$ "-80 adjusters with removable knobs and hex drive

A quality 1" mirror mount for general laboratory applications. Clearance hole for imperial and metric mounting. Features $\frac{1}{4}$ "-80 adjusters with removable knobs and hex key drive. A nylon tipped set screw positively locks the optic in place. Stainless steel adjusters act on hardened inserts to ensure smooth movement even with small adjustments.

Specifications

| | |
|--------------------|---------------------------|
| Mirror size | 1" / 25 mm diameter |
| Angular range | $\pm 4^\circ$ |
| Angular resolution | 5 arc seconds |
| Configuration | Right-hand or left-hand |
| Base mounting | M4 (#8-32) clearance hole |

Kinematic Mirror & Component Mounts: Standard Kinematic Mirror Mounts

KTO121 1" Threaded Kinematic Mirror Mount



- Angular range $\pm 4^\circ$
- Load optics from the rear
- Left or right-handed mounting
- Imperial and metric compatible
- Particularly suitable for thin optics
- Holds 1" (25.4 mm) optics up to 6.5 mm thick
- Threaded retaining ring to reduce optic distortion
- Two $\frac{1}{4}$ "-80 adjusters with removable knobs and hex drive

A quality 1" mirror mount with rear loading and a threaded retaining ring to minimise optic distortion. Clearance holes for imperial and metric mounting. Features two $\frac{1}{4}$ "-80 adjusters with hex drive and removable knobs. Stainless steel adjusters act on hardened inserts to ensure smooth movement even with small adjustments. One ORR100 retaining ring is included with each mount and additional rings are available separately.

Specifications

| | |
|--------------------|--|
| Mirror size | 1" / 25 mm diameter |
| Mirror thickness | $\frac{1}{2}$ " / 6.5 mm |
| Angular range | $\pm 4^\circ$ |
| Angular resolution | 3 arc seconds |
| Configuration | Right hand, left hand or horizontal mounting |
| Base mounting | M4 (#8-32) clearance mounting holes |

Kinematic Mirror & Component Mounts: Locking Kinematic Mirror Mounts

KML031 ½" (12.5 mm) Locking Kinematic Mirror Mount



- Angular range $\pm 4^\circ$
- Superior locking mechanism
- Left or right-handed mounting
- Imperial and metric compatible
- Angular adjustment and translation
- Three ¼-80 adjusters with removable knobs and hex drive

A quality half inch locking mirror mount for demanding applications. With clearance holes for imperial and metric mounting.

It features three ¼-80 adjusters with removable knobs and hex drive allowing both angular adjustment and translation. A nylon tipped set-screw positively locks the optic in place. Stainless steel adjusters act on hardened inserts to ensure smooth movement, even with small adjustments.

Locking is performed by a superior mechanism that virtually eliminates movement during the locking process. Once positioned, the adjusters are held in place by a simple twist of the scalloped lock ring.

Specifications

| | |
|--------------------|--|
| Mirror size | ½" / 12.7 mm diameter |
| Angular range | $\pm 4^\circ$ |
| Angular resolution | 7 arc seconds |
| Configuration | Right-hand or left-hand user changeable |
| Base mounting | M4 (#8-32) clearance hole on the base for either left or right handed mounting |

Kinematic Mirror & Component Mounts: Locking Kinematic Mirror Mounts

KML131 1" (25 mm) Locking Kinematic Mirror Mount



- Angular range $\pm 4^\circ$
- Superior locking mechanism
- Left or right-handed mounting
- Imperial and metric compatible
- Angular adjustment and translation
- Three $\frac{1}{4}$ -80 adjusters with removable knobs and hex drive

A quality one inch locking mirror mount for demanding applications. With clearance holes for imperial and metric mounting.

It features three $\frac{1}{4}$ -80 adjusters with removable knobs and hex drive allowing both angular adjustment and translation. A nylon tipped set-screw positively locks the optic in place. Stainless steel adjusters act on hardened inserts to ensure smooth movement, even with small adjustments.

Locking is performed by a superior mechanism that virtually eliminates movement during the locking process. Once positioned, the adjusters are held in place by a simple twist of the scalloped lock ring.

Specifications

| | |
|--------------------|--|
| Mirror size | 1" / 25 mm diameter |
| Angular range | $\pm 4^\circ$ |
| Angular resolution | 5 arc seconds |
| Configuration | Right-hand or left-hand user changeable |
| Base mounting | M4 (#8-32) clearance hole on the base for either left or right handed mounting |

Kinematic Mirror & Component Mounts: Locking Kinematic Mirror Mounts

KML231 2" (50 mm) Locking Kinematic Mirror Mount



- Angular range $\pm 4^\circ$
- Superior locking mechanism
- Left or right-handed mounting
- Imperial and metric compatible
- Angular adjustment and translation
- Three $\frac{1}{4}$ -80 adjusters with removable knobs and hex drive

A quality two inch locking mirror mount for demanding applications. With clearance holes for imperial and metric mounting.

It features three $\frac{1}{4}$ -80 adjusters with removable knobs and hex drive allowing both angular adjustment and translation. A nylon tipped set-screw positively locks the optic in place. Stainless steel adjusters act on hardened inserts to ensure smooth movement, even with small adjustments.

Locking is performed by a superior mechanism that virtually eliminates movement during the locking process. Once positioned, the adjusters are held in place by a simple twist of the scalloped lock ring.

Specifications

| | |
|--------------------|---|
| Mirror size | 1" / 25 mm diameter |
| Angular range | $\pm 4^\circ$ |
| Angular resolution | 3 arc seconds |
| Configuration | Right-hand or left-hand user changeable |
| Base mounting | Six M4 (#8-32) clearance holes on the base for either left or right handed mounting |

Kinematic Mirror & Component Mounts: Kinematic Component Mounts

KCL121 Kinematic Cylindrical Lens Mount



- Rubber mounting faces
- Holds cylindrical lenses
- Angular range $\pm 4^\circ$
- Imperial and metric compatible
- Two $\frac{1}{4}$ "-80 adjusters with removable knobs and hex drive

The KCL121 is a quality mount for holding cylindrical lenses. It has a counterbored clearance hole for imperial or metric mounting and features two $\frac{1}{4}$ "-80 stainless steel adjusters with removable knobs and hex drive that act on hardened inserts to ensure smooth movement - even with small adjustments.

The open design allows mounting of optics of any width, while the height of the optic held can be increased by extending the post with the supplied extension pieces.

Specifications

| | |
|--------------------|---|
| Optic height | 30 mm (65 mm with included extension pieces) |
| Angular range | $\pm 4^\circ$ |
| Angular resolution | 3 arc seconds |
| Configuration | Right-hand |
| Base mounting | M4 (#8-32) counterbored mounting clearance hole |

Kinematic Mirror & Component Mounts: Kinematic Component Mounts

KMF121 Kinematic Mount Frame



- Angular range $\pm 4^\circ$
- Supplied without front plate
- Imperial and metric compatible
- User configurable left-hand or right-hand geometry
- Horizontal post mounting with M4 (#8-32) clearance hole
- Two $\frac{1}{4}$ "-80 adjusters with removable knobs and hex drive

A quality mount for general laboratory applications. The user can mount their own front plate or parts. Clearance mounting holes for imperial and metric mounting. Features two $\frac{1}{4}$ "-80 adjusters with removable knobs and hex drive. Stainless steel adjusters act on a hardened inserts to ensure smooth movement even with small adjustments.

A front plate can be attached with four M2.5 screws.

Specifications

| | |
|--------------------|--|
| Angular range | $\pm 4^\circ$ |
| Angular resolution | 3 arc seconds |
| Configuration | Right-hand, left-hand or horizontal mounting |
| Base mounting | M4 (#8-32) clearance holes |

Kinematic Mirror & Component Mounts: Kinematic Component Mounts

KMO121 Kinematic Objective Mount



- Angular range $\pm 4^\circ$
- 0.8"-36 RMS thread
- Suitable for mounting microscope objectives
- Left or right-handed mounting
- Imperial and metric compatible
- Two $\frac{1}{4}$ "-80 adjusters with removable knobs and hex drive

The KMO121 is a quality kinematic mount for mounting microscope objectives. It has clearance holes for imperial and metric mounting and features two stainless steel $\frac{1}{4}$ "-80 adjusters with hex drive and removable knobs that act on hardened inserts to ensure smooth movement - even with small adjustments.

Specifications

| | |
|--------------------|----------------------------------|
| Angular range | $\pm 4^\circ$ |
| Angular resolution | 3 arc seconds |
| Configuration | Right-hand or left-hand mounting |
| Base mounting | M4 (#8-32) clearance holes |

Kinematic Mirror & Component Mounts: Kinematic Component Mounts

KNA121 Plain Kinematic Mount



- Angular range $\pm 4^\circ$
- Left or right-handed mounting
- Imperial and metric compatible
- Two $\frac{1}{8}$ "-80 adjusters with removable knobs and hex drive
- Removable unanodised front plate for user modification
- Vertical or horizontal post mounting with M4 (#8-32) clearance holes

The KNA121 is a quality mount for general laboratory applications. The front plate can be removed for user modification or optics can be glued directly to it.

Clearance holes are provided for imperial and metric mounting in either vertical or horizontal planes. KNA121 features two stainless steel $\frac{1}{8}$ "-80 adjusters with removable knobs and hex drive that act on hardened inserts to ensure a smooth movement - even with small adjustments.

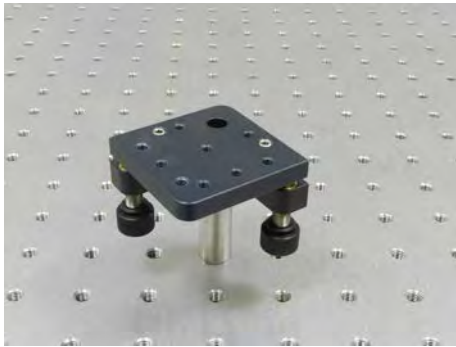
Optic is held in place by the CAA101 clamp arm supplied.

Specifications

| | |
|--------------------|----------------------------------|
| Angular range | $\pm 4^\circ$ |
| Angular resolution | 3 arc seconds |
| Configuration | Right-hand or left-hand mounting |
| Base mounting | M4 (#8-32) clearance holes |

Kinematic Mirror & Component Mounts: Kinematic Component Mounts

KPH121 Kinematic Platform Mount



- Angular range $\pm 4^\circ$
- Left or right-handed vertical mounting
- Imperial and metric compatible
- Tapped M4 hole pattern on front plate
- Horizontal post mounting with M4 (#8-32) clearance hole
- $\frac{1}{4}$ "-80 adjusters with removable knobs and hex drive

A quality platform mount for general laboratory applications. Clearance holes for imperial and metric mounting. Features two $\frac{1}{4}$ "-80 adjusters with hex drive and removable knobs. Stainless steel adjusters act on hardened inserts to ensure smooth movement even with small adjustments.

Specifications

| | |
|--------------------|---|
| Angular range | $\pm 4^\circ$ |
| Angular resolution | 3 arc seconds |
| Configuration | Right-hand or left-hand vertical mounting |
| Base mounting | M4 (#8-32) clearance holes |

Kinematic Mirror & Component Mounts: Kinematic Component Mounts

KPV121 Kinematic Prism Table



- Angular range $\pm 4^\circ$
- Imperial and metric compatible
- Tapped M4 holes
- $\frac{1}{4}$ "-80 adjusters with removable knobs and hex drive

The KPV121 is a quality platform mount for general laboratory applications. It has a counterbored clearance hole for imperial and metric mounting and features two $\frac{1}{4}$ "-80 stainless steel adjusters with removable knobs and hex drive that act on hardened inserts to ensure smooth movement - even with small adjustments.

The optic platform has tapped M4 mounting holes.

Specifications

| | |
|--------------------|--|
| Angular range | $\pm 4^\circ$ |
| Angular resolution | 3 arc seconds |
| Configuration | Right-hand |
| Base mounting | M4 (#8-32) counterbored mounting clearance holes |

Kinematic Mirror & Component Mounts: Kinematic Component Mounts

KTA121 Three Axis 1" Kinematic Mount



- 3-axis movement
- Angular range $\pm 4^\circ$ with 360° rotation
- Holds 1" (25.4 mm) optics up to 11.4 mm thick
- Threaded retaining ring
- Imperial and metric compatible
- Two $\frac{1}{4}$ "-80 adjusters with removable knobs and hex drive

The KTA121 is a quality one inch kinematic mount with three axis adjustment including rotation. It has clearance holes for imperial or metric mounting and features two $\frac{1}{4}$ "-80 stainless steel adjusters which act on hardened inserts.

The rotation axis utilises a pair of precision thrust bearings to give smooth continuous 360° rotation that can be locked at the desired angle.

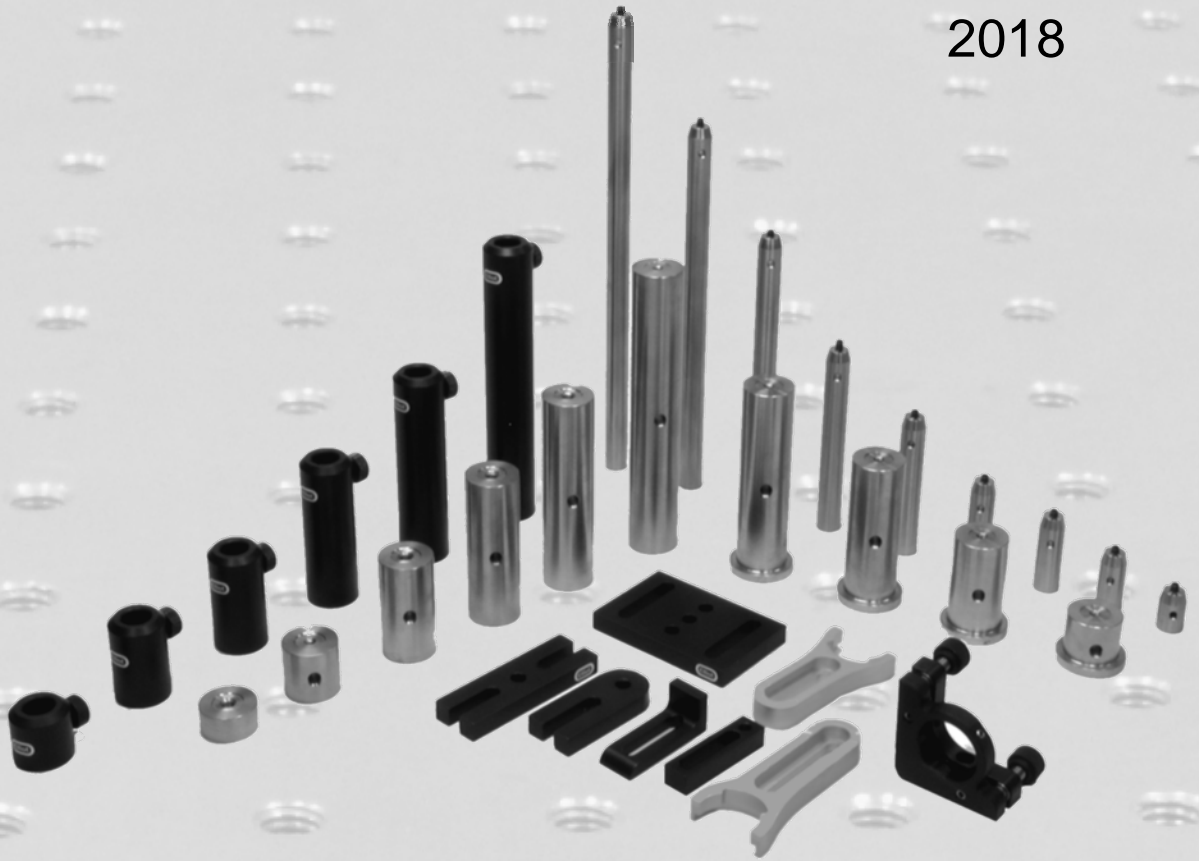
A single optic retaining ring is included with each mount and additional retaining rings ORR100 are available separately.

Specifications

| | |
|--------------------|---------------------------|
| Angular range | $\pm 4^\circ$ |
| Angular resolution | 3 arc seconds |
| Mirror size | 1" / 25 mm diameter |
| Mirror thickness | 11.4 mm |
| Rotation range | 360° |
| Graduations | 2° |
| Base mounting | M4 (#8-32) clearance hole |

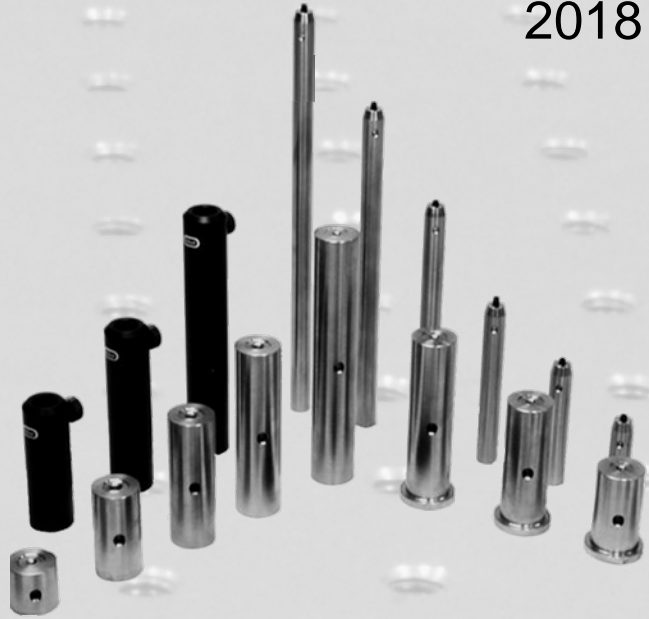
Component Mounts

2018



Pillars & Pedestal Posts

2018



Component Mounting: 1" Pillars & Pedestal Posts: 1" Pillar Posts

POP012 12.5 mm long, 1" diameter Stainless Steel Pillar Post



- A 1" diameter stainless steel pillar posts for general mounting applications.
- M4 tapped at one end to accept optical mounts
- M6 tapped at other end to mount on optical table
- A through hole is provided to allow tightening when mounted directly to optical tables
- Can also be used as extensions for PPP pedestal posts
- POP pillar posts can be converted to pedestal style pillar posts with the addition of our BAS101 pedestal base adaptor

From our range of 1" diameter stainless steel pillar posts for general mounting applications.

The posts are tapped M6 in both ends for mounting, and cannot be used with ESP series post spacers.

A through hole is provided to allow tightening when mounted directly to optical tables. Can also be used as extensions for PPP pedestal posts.

The POP pillar posts can be converted to pedestal style pillar posts with the addition of our BAS101 pedestal base adapter.

Component Mounting: 1" Pillars & Pedestal Posts 1" Pillar Posts

POP025 25 mm long, 1" diameter Stainless Steel Pillar Post



- A 1" diameter stainless steel pillar posts for general mounting applications.
- M4 tapped at one end to accept optical mounts
- M6 tapped at other end to mount on optical table
- A through hole is provided to allow tightening when mounted directly to optical tables
- Can also be used as extensions for PPP pedestal posts
- POP pillar posts can be converted to pedestal style pillar posts with the addition of our BAS101 pedestal base adaptor

From our range of 1" diameter stainless steel pillar posts for general mounting applications.

The posts are tapped M6 in both ends for mounting, and cannot be used with ESP series post spacers.

A through hole is provided to allow tightening when mounted directly to optical tables. Can also be used as extensions for PPP pedestal posts.

The POP pillar posts can be converted to pedestal style pillar posts with the addition of our BAS101 pedestal base adapter.

Component Mounting: 1" Pillars & Pedestal Posts 1" Pillar Posts

POP050 50 mm long, 1" diameter Stainless Steel Pillar Post



- A 1" diameter stainless steel pillar posts for general mounting applications.
- M4 tapped at one end to accept optical mounts
- M6 tapped at other end to mount on optical table
- A through hole is provided to allow tightening when mounted directly to optical tables
- Can also be used as extensions for PPP pedestal posts
- POP pillar posts can be converted to pedestal style pillar posts with the addition of our BAS101 pedestal base adaptor

From our range of 1" diameter stainless steel pillar posts for general mounting applications.

The posts are tapped M6 in both ends for mounting, and cannot be used with ESP series post spacers.

A through hole is provided to allow tightening when mounted directly to optical tables. Can also be used as extensions for PPP pedestal posts.

The POP pillar posts can be converted to pedestal style pillar posts with the addition of our BAS101 pedestal base adapter.

Component Mounting: 1" Pillars & Pedestal Posts 1" Pillar Posts

POP075 75 mm long, 1" diameter Stainless Steel Pillar Post



- A 1" diameter stainless steel pillar posts for general mounting applications.
- M4 tapped at one end to accept optical mounts
- M6 tapped at other end to mount on optical table
- A through hole is provided to allow tightening when mounted directly to optical tables
- Can also be used as extensions for PPP pedestal posts
- POP pillar posts can be converted to pedestal style pillar posts with the addition of our BAS101 pedestal base adaptor

From our range of 1" diameter stainless steel pillar posts for general mounting applications.

The posts are tapped M6 in both ends for mounting, and cannot be used with ESP series post spacers.

A through hole is provided to allow tightening when mounted directly to optical tables. Can also be used as extensions for PPP pedestal posts.

The POP pillar posts can be converted to pedestal style pillar posts with the addition of our BAS101 pedestal base adapter.

Component Mounting: 1" Pillars & Pedestal Posts 1" Pillar Posts

POP100 100 mm long, 1" diameter Stainless Steel Pillar Post



- A 1" diameter stainless steel pillar posts for general mounting applications.
- M4 tapped at one end to accept optical mounts
- M6 tapped at other end to mount on optical table
- A through hole is provided to allow tightening when mounted directly to optical tables
- Can also be used as extensions for PPP pedestal posts
- POP pillar posts can be converted to pedestal style pillar posts with the addition of our BAS101 pedestal base adaptor

From our range of 1" diameter stainless steel pillar posts for general mounting applications.

The posts are tapped M6 in both ends for mounting, and cannot be used with ESP series post spacers.

A through hole is provided to allow tightening when mounted directly to optical tables. Can also be used as extensions for PPP pedestal posts.

The POP pillar posts can be converted to pedestal style pillar posts with the addition of our BAS101 pedestal base adapter.

Component Mounting: 1" Pillars & Pedestal Posts 1" Pillar Posts

POP150 150 mm long, 1" diameter Stainless Steel Pillar Post



- A 1" diameter stainless steel pillar posts for general mounting applications.
- M4 tapped at one end to accept optical mounts
- M6 tapped at other end to mount on optical table
- A through hole is provided to allow tightening when mounted directly to optical tables
- Can also be used as extensions for PPP pedestal posts
- POP pillar posts can be converted to pedestal style pillar posts with the addition of our BAS101 pedestal base adaptor

From our range of 1" diameter stainless steel pillar posts for general mounting applications.

The posts are tapped M6 in both ends for mounting, and cannot be used with ESP series post spacers.

A through hole is provided to allow tightening when mounted directly to optical tables. Can also be used as extensions for PPP pedestal posts.

The POP pillar posts can be converted to pedestal style pillar posts with the addition of our BAS101 pedestal base adapter.

Component Mounting: 1" Pillars & Pedestal Posts 1" Pillar Posts

BAS101 Pedestal Base Adaptor



- Pedestal base adaptor to convert the POP range of 1" pillar posts to 1" pedestal pillar posts
- Can also be used to convert the POH post holders into pedestal style allowing the use of TCL clamping forks

From our range of 1" stainless steel pillar posts for general mounting of applications.



Pedestal base adaptor to convert the POP range of 1" pillar posts to 1" pedestal pillar posts. Can also be used to convert the POH post holders into pedestal style allowing the use of TCL clamping forks.

Component Mounting: 1" Pillars & Pedestal Posts 1" Pedestal Posts

PPP025 25 mm long, 1" diameter Stainless Steel Pedestal Pillar Post



- A 1" diameter stainless steel pedestal post for direct mounting of optical components
- Tapped M4 at both ends
- Use with table clamping forks TCL011 or TCL012 to position post anywhere on an optical table
- Height can be extended with the POP range of posts
- A through hole is provided to allow tightening

From our range of 1" diameter stainless steel pedestal posts for direct mounting of optical components.

When used with table clamping forks (TCL011 or TCL012), these posts can be positioned anywhere on an optical table.

The height can be extended with the POP range of posts and a through hole is provided to allow tightening when attached to other posts.

Tapped M4 at both ends.

Component Mounting: 1" Pillars & Pedestal Posts 1" Pedestal Posts

PPP050 50 mm long, 1" diameter Stainless Steel Pedestal Pillar Post



- A 1" diameter stainless steel pedestal post for direct mounting of optical components
- Tapped M4 at both ends
- Use with table clamping forks TCL011 or TCL012 to position post anywhere on an optical table
- Height can be extended with the POP range of posts
- A through hole is provided to allow tightening

From our range of 1" diameter stainless steel pedestal posts for direct mounting of optical components.

When used with table clamping forks (TCL011 or TCL012), these posts can be positioned anywhere on an optical table.

The height can be extended with the POP range of posts and a through hole is provided to allow tightening when attached to other posts.

Tapped M4 at both ends.

Component Mounting: 1" Pillars & Pedestal Posts 1" Pedestal Posts

PPP075 75 mm long, 1" diameter Stainless Steel Pedestal Pillar Post



- A 1" diameter stainless steel pedestal post for direct mounting of optical components
- Tapped M4 at both ends
- Use with table clamping forks TCL011 or TCL012 to position post anywhere on an optical table
- Height can be extended with the POP range of posts
- A through hole is provided to allow tightening

From our range of 1" diameter stainless steel pedestal posts for direct mounting of optical components.

When used with table clamping forks (TCL011 or TCL012), these posts can be positioned anywhere on an optical table.

The height can be extended with the POP range of posts and a through hole is provided to allow tightening when attached to other posts.

Tapped M4 at both ends.

Component Mounting: 1" Pillars & Pedestal Posts 1" Pedestal Posts

PPP100 100 mm long, 1" diameter Stainless Steel Pedestal Pillar Post



- A 1" diameter stainless steel pedestal post for direct mounting of optical components
- Tapped M4 at both ends
- Use with table clamping forks TCL011 or TCL012 to position post anywhere on an optical table
- Height can be extended with the POP range of posts
- A through hole is provided to allow tightening

From our range of 1" diameter stainless steel pedestal posts for direct mounting of optical components.

When used with table clamping forks (TCL011 or TCL012), these posts can be positioned anywhere on an optical table.

The height can be extended with the POP range of posts and a through hole is provided to allow tightening when attached to other posts.

Tapped M4 at both ends.

Component Mounting: 1" Pillars & Pedestal Posts Post Spacers

ESP003 3 mm Spacer for 1" Posts



- A 1" diameter stainless steel post spacer for use with the PPP & POP range of posts
- Can be used singly or in combination to provide intermediate heights between the standard sizes
- The spacers have an M4 through hole

From our range of 1" diameter stainless steel post spacers for use with the PPP and POP range of posts. Can be used singly or in combination to provide intermediate heights between the standard sizes. The spacers have an M4 through hole and mount on the top of the post.

Component Mounting: 1" Pillars & Pedestal Posts Post Spacers

ESP005 5 mm Spacer for 1" Posts



- A 1" diameter stainless steel post spacer for use with the PPP & POP range of posts
- Can be used singly or in combination to provide intermediate heights between the standard sizes
- The spacers have an M4 through hole

From our range of 1" diameter stainless steel post spacers for use with the PPP and POP range of posts. Can be used singly or in combination to provide intermediate heights between the standard sizes. The spacers have an M4 through hole and mount on the top of the post.

Component Mounting: 1" Pillars & Pedestal Posts Post Spacers

ESP007 7 mm Spacer for 1" Posts



- A 1" diameter stainless steel post spacer for use with the PPP & POP range of posts
- Can be used singly or in combination to provide intermediate heights between the standard sizes
- The spacers have an M4 through hole

From our range of 1" diameter stainless steel post spacers for use with the PPP and POP range of posts. Can be used singly or in combination to provide intermediate heights between the standard sizes. The spacers have an M4 through hole and mount on the top of the post.

Component Mounting: 1" Pillars & Pedestal Posts Post Spacers

ESP009 9 mm Spacer for 1" Posts



- A 1" diameter stainless steel post spacer for use with the PPP & POP range of posts
- Can be used singly or in combination to provide intermediate heights between the standard sizes
- The spacers have an M4 through hole

From our range of 1" diameter stainless steel post spacers for use with the PPP and POP range of posts. Can be used singly or in combination to provide intermediate heights between the standard sizes. The spacers have an M4 through hole and mount on the top of the post.

Component Mounting: 1" Pillars & Pedestal Posts 1" Post Clamps

OPC410 1" Post Clamp for M4 Components



- Allows the side or angle mounting of M4 components on PPP & POP 1" diameter posts
- Clamps to a 1" post using a non-marring brass tipped set screw
- Two mounting M4 holes: one tapped and one counterbored
- Can be also be used in creating 3D structures

The OPC410 post clamp allows the side or angle mounting of M4 components on the PPP and POP series of 1" diameter posts and can be also be used in creating 3D structures.

The OPC410 clamps to a 1" post using a non-marring brass tipped set screw and has two mounting M4 holes, one tapped and one counterbored.

Component Mounting: 1" Pillars & Pedestal Posts 1" Post Clamps

OPC610 1" Post Clamp for M6 Components



- Allows the side or angle mounting of M6 components on PPP & POP 1" diameter posts
- Clamps to a 1" post using a non-marring brass tipped set screw
- Two mounting M6 holes: one tapped and one counterbored
- Can be also be used in creating 3D structures

The OPC610 post clamp allows the side or angle mounting of M6 components on the PPP and POP series of 1" diameter posts and can be also be used in creating 3D structures.

The OPC610 clamps to a 1" post using a non-marring brass tipped set screw and has two mounting M6 holes, one tapped and one counterbored.

Component Mounting: Table Clamps and Table Clamping Forks

TCL011 Short Fork Table Clamp



- For PPP pedestal pillar posts or adapted POH post holders
- Used when a base is not near suitable holes on an optical table

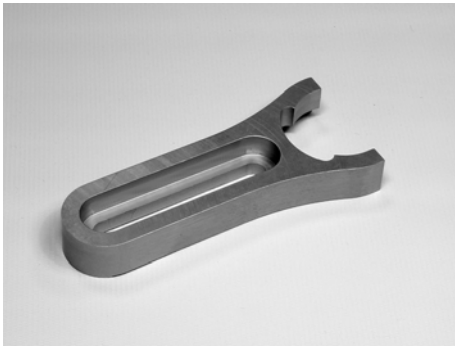
Table clamps are designed to secure accessories to the optical table when suitable holes are not available.

Accessories

1" Pillar Posts
1" Pedestal Posts
Bases
Posts
Post Holders

Component Mounting: Table Clamps and Table Clamping Forks

TCL012 Long Fork Table Clamp



- For PPP pedestal pillar posts or adapted POH post holders
- Used when a base is not near suitable holes on an optical table

Table clamps are designed to secure accessories to the optical table when suitable holes are not available.

These clamping forks are for holding PPP pedestal pillar posts or POH post holders that have been fitted with a BAS101 pedestal base adaptor. Imperial or metric compatible.

Accessories

1" Pillar Posts
1" Pedestal Posts
Bases
Posts
Post Holders

1/2" Posts, Holders & Bases

2018



Component Mounting: ½" Posts, Holders & Bases: ½" Posts

POS020 20 mm long, ½" diameter Stainless Steel Post



- Precision ground ½" diameter Stainless Steel
- Removable M4 stud screw in the top
- M6 tapped hole in the base
- Through hole provided to allow tightening

The post is tapped M6 in the base with removable M4 stud screw in the top. A through hole is provided to allow tightening when mounted directly to an optical table.

Accessories

Post Holders

Bases

Table Clamps & Table Clamping Forks

Component Mounting: ½" Posts, Holders & Bases: ½" Posts

POS030 30 mm long, ½" diameter Stainless Steel Post



- Precision ground ½" diameter Stainless Steel
- Removable M4 stud screw in the top
- M6 tapped hole in the base
- Through hole provided to allow tightening

The post is tapped M6 in the base with removable M4 stud screw in the top. A through hole is provided to allow tightening when mounted directly to an optical table.

Accessories

Post Holders

Bases

Table Clamps & Table Clamping Forks

Component Mounting: ½" Posts, Holders & Bases: ½" Posts

POS040 40 mm long, ½" diameter Stainless Steel Post



- Precision ground ½" diameter Stainless Steel
- Removable M4 stud screw in the top
- M6 tapped hole in the base
- Through hole provided to allow tightening

The post is tapped M6 in the base with removable M4 stud screw in the top. A through hole is provided to allow tightening when mounted directly to an optical table.

Accessories

Post Holders

Bases

Table Clamps & Table Clamping Forks

Component Mounting: ½" Posts, Holders & Bases: ½" Posts

POS050 50 mm long, ½" diameter Stainless Steel Post



- Precision ground ½" diameter Stainless Steel
- Removable M4 stud screw in the top
- M6 tapped hole in the base
- Through hole provided to allow tightening

The post is tapped M6 in the base with removable M4 stud screw in the top. A through hole is provided to allow tightening when mounted directly to an optical table.

Accessories

Post Holders

Bases

Table Clamps & Table Clamping Forks

Component Mounting: ½" Posts, Holders & Bases: ½" Posts

POS075 75 mm long, ½" diameter Stainless Steel Post



- Precision ground ½" diameter Stainless Steel
- Removable M4 stud screw in the top
- M6 tapped hole in the base
- Through hole provided to allow tightening

The post is tapped M6 in the base with removable M4 stud screw in the top. A through hole is provided to allow tightening when mounted directly to an optical table.

Accessories

Post Holders

Bases

Table Clamps & Table Clamping Forks

Component Mounting: ½" Posts, Holders & Bases: ½" Posts

POS100 100 mm long, ½" diameter Stainless Steel Post



- Precision ground ½" diameter Stainless Steel
- Removable M4 stud screw in the top
- M6 tapped hole in the base
- Through hole provided to allow tightening

The post is tapped M6 in the base with removable M4 stud screw in the top. A through hole is provided to allow tightening when mounted directly to an optical table.

Accessories

Post Holders

Bases

Table Clamps & Table Clamping Forks

Component Mounting: ½" Posts, Holders & Bases: ½" Posts

POS150 150 mm long, ½" diameter Stainless Steel Post



- Precision ground ½" diameter Stainless Steel
- Removable M4 stud screw in the top
- M6 tapped hole in the base
- Through hole provided to allow tightening

The post is tapped M6 in the base with removable M4 stud screw in the top. A through hole is provided to allow tightening when mounted directly to an optical table.

Accessories

Post Holders

Bases

Table Clamps & Table Clamping Forks

Component Mounting: ½" Posts, Holders & Bases: ½" Posts

POS200 200 mm long, ½" diameter Stainless Steel Post



- Precision ground ½" diameter Stainless Steel
- Removable M4 stud screw in the top
- M6 tapped hole in the base
- Through hole provided to allow tightening

The post is tapped M6 in the base with removable M4 stud screw in the top. A through hole is provided to allow tightening when mounted directly to an optical table.

Accessories

Post Holders

Bases

Table Clamps & Table Clamping Forks

Component Mounting: ½" Posts, Holders & Bases: ½" Posts

POS250 250 mm long, ½" diameter Stainless Steel Post



- Precision ground ½" diameter Stainless Steel
- Removable M4 stud screw in the top
- M6 tapped hole in the base
- Through hole provided to allow tightening

The post is tapped M6 in the base with removable M4 stud screw in the top. A through hole is provided to allow tightening when mounted directly to an optical table.

Accessories

Post Holders

Bases

Table Clamps & Table Clamping Forks

Component Mounting: ½" Posts, Holders & Bases: ½" Posts

POS300 300 mm long, ½" diameter Stainless Steel Post



- Precision ground ½" diameter Stainless Steel
- Removable M4 stud screw in the top
- M6 tapped hole in the base
- Through hole provided to allow tightening

The post is tapped M6 in the base with removable M4 stud screw in the top. A through hole is provided to allow tightening when mounted directly to an optical table.

Accessories

Post Holders

Bases

Table Clamps & Table Clamping Forks

Component Mounting: ½" Posts, Holders & Bases: ½" Post Holders

POH025 25 mm long Holder for ½" diameter Posts



- Designed to hold our POS range or any other ½" diameter post
- Can be attached to any of our BAS range of bases
- Converts to pedestal style with a BAS101 adaptor
- Mounts directly on optical tables via the M6 tapped hole
- Internal relief cut design provides two line-contacts for stable positioning of the post
- Easy positioning is enabled by the spring-loaded thumbscrew

The POH025 post holder is designed to hold our POS range or any other ½" diameter post.

It can be attached to any of our BAS range of bases, for example, converted to pedestal style with a BAS101 adaptor, or mounted directly on optical tables via the M6 tapped hole.

The internal relief cut design provides two line-contacts for stable positioning of the post and easy positioning is enabled by the spring-loaded THS001 thumbscrew (which is also available as a separate item).

Accessories

Spring Loaded Thumbscrew THS001

Component Mounting: ½" Posts, Holders & Bases: ½" Post Holders

POH040 40 mm long Holder for ½" diameter Posts



- Designed to hold our POS range or any other ½" diameter post
- Can be attached to any of our BAS range of bases
- Converts to pedestal style with a BAS101 adaptor
- Mounts directly on optical tables via the M6 tapped hole
- Internal relief cut design provides two line-contacts for stable positioning of the post
- Easy positioning is enabled by the spring-loaded thumbscrew

The POH040 post holder is designed to hold our POS range or any other ½" diameter post.

It can be attached to any of our BAS range of bases, for example, converted to pedestal style with a BAS101 adaptor, or mounted directly on optical tables via the M6 tapped hole.

The internal relief cut design provides two line-contacts for stable positioning of the post and easy positioning is enabled by the spring-loaded THS001 thumbscrew (which is also available as a separate item).

Accessories

Spring Loaded Thumbscrew THS001

Component Mounting: ½" Posts, Holders & Bases: ½" Post Holders

POH050 50 mm long Holder for ½" diameter Posts



- Designed to hold our POS range or any other ½" diameter post
- Can be attached to any of our BAS range of bases
- Converts to pedestal style with a BAS101 adaptor
- Mounts directly on optical tables via the M6 tapped hole
- Internal relief cut design provides two line-contacts for stable positioning of the post
- Easy positioning is enabled by the spring-loaded thumbscrew

The POH050 post holder is designed to hold our POS range or any other ½" diameter post.

It can be attached to any of our BAS range of bases, for example, converted to pedestal style with a BAS101 adaptor, or mounted directly on optical tables via the M6 tapped hole.

The internal relief cut design provides two line-contacts for stable positioning of the post and easy positioning is enabled by the spring-loaded THS001 thumbscrew (which is also available as a separate item).

Accessories

Spring Loaded Thumbscrew THS001

Component Mounting: ½" Posts, Holders & Bases: ½" Post Holders

POH075 75 mm long Holder for ½" diameter Posts



- Designed to hold our POS range or any other ½" diameter post
- Can be attached to any of our BAS range of bases
- Converts to pedestal style with a BAS101 adaptor
- Mounts directly on optical tables via the M6 tapped hole
- Internal relief cut design provides two line-contacts for stable positioning of the post
- Easy positioning is enabled by the spring-loaded thumbscrew

The POH075 post holder is designed to hold our POS range or any other ½" diameter post.

It can be attached to any of our BAS range of bases, for example, converted to pedestal style with a BAS101 adaptor, or mounted directly on optical tables via the M6 tapped hole.

The internal relief cut design provides two line-contacts for stable positioning of the post and easy positioning is enabled by the spring-loaded THS001 thumbscrew (which is also available as a separate item).

Accessories

Spring Loaded Thumbscrew THS001

Component Mounting: ½" Posts, Holders & Bases: ½" Post Holders

POH100 100 mm long Holder for ½" diameter Posts



- Designed to hold our POS range or any other ½" diameter post
- Can be attached to any of our BAS range of bases
- Converts to pedestal style with a BAS101 adaptor
- Mounts directly on optical tables via the M6 tapped hole
- Internal relief cut design provides two line-contacts for stable positioning of the post
- Easy positioning is enabled by the spring-loaded thumbscrew

The POH100 post holder is designed to hold our POS range or any other ½" diameter post.

It can be attached to any of our BAS range of bases, for example, converted to pedestal style with a BAS101 adaptor, or mounted directly on optical tables via the M6 tapped hole.

The internal relief cut design provides two line-contacts for stable positioning of the post and easy positioning is enabled by the spring-loaded THS001 thumbscrew (which is also available as a separate item).

Accessories

Spring Loaded Thumbscrew THS001

Component Mounting: ½" Posts, Holders & Bases: ½" Post Holders

POH150 150 mm long Holder for ½" diameter Posts



- Designed to hold our POS range or any other ½" diameter post
- Can be attached to any of our BAS range of bases
- Converts to pedestal style with a BAS101 adaptor
- Mounts directly on optical tables via the M6 tapped hole
- Internal relief cut design provides two line-contacts for stable positioning of the post
- Easy positioning is enabled by the spring-loaded thumbscrew

The POH150 post holder is designed to hold our POS range or any other ½" diameter post.

It can be attached to any of our BAS range of bases, for example, converted to pedestal style with a BAS101 adaptor, or mounted directly on optical tables via the M6 tapped hole.

The internal relief cut design provides two line-contacts for stable positioning of the post and easy positioning is enabled by the spring-loaded THS001 thumbscrew (which is also available as a separate item).

Accessories

Spring Loaded Thumbscrew THS001

Component Mounting: ½" Posts, Holders & Bases: ½" Post Clamps

EPC002 End Post Clamp



- Horizontally mount a POS or any other ½" post atop another at a fixed height
- M4 tapped hole for attachment to the vertical post
- Internal relief cut design provides two line-contacts for stable positioning
- Brass thumbscrew with 4 mm hex socket



The EPC002 is used to horizontally mount a POS post or any other ½" post atop another at a fixed height. The clamp has an M4 tapped hole for component attachment to the vertical post.

The internal relief cut design provides two line-contacts for stable positioning of the post and it is securely held by a brass thumbscrew incorporating a 4 mm hex socket.

Component Mounting: ½" Posts, Holders & Bases: ½" Post Clamps

THS001 Spring Loaded Thumbscrew



The THS001 is designed for use with POH post holders and POS stainless steel posts. It is made of brass to prevent marring and has a spring loaded plunger to allow single handed adjustment of the post prior to final tightening.

Component Mounting: ½" Posts, Holders & Bases: ½" Post Clamps

THS002 Thumbscrew



The THS002 is a brass locking thumbscrew incorporating a 4 mm hex socket for use with the POH range of post holders and EPC post clamps. It can be used to firmly lock POS stainless steel posts in place without marring.

Component Mounting: ½" Posts, Holders & Bases: Bases

BAS001 One Sided Base



- Imperial/Metric optical table compatible
- Accepts M6 or ¼"-20 cap screws

One sided base for mounting our POH range or other post holders. The base has a clearance hole, to allow post holders to be attached by M6 or ¼"-20 soc cap screws.

All bases are compatible with Imperial or Metric optical tables and are machined specifically for stable mounting.

Specifications

Dimensions 25 x 57.5 x 9.2 mm

Component Mounting: ½" Posts, Holders & Bases: Bases

BAS002 Two Sided Base



- Imperial/Metric optical table compatible
- Accepts M6 socket cap screws

Two sided base for mounting the POH range of post holders. The base has an M6 clearance hole, to allow post holders to be attached by M6 soc cap screws.

All bases are compatible with Imperial or Metric optical tables and are machined specifically for stable mounting.

Specifications

Dimensions 25 x 76 x 9.2 mm

Component Mounting: ½" Posts, Holders & Bases: Bases

BAS003 Twin slotted base



- Imperial/Metric optical table compatible
- Accepts M6 socket cap screws



Twin slotted base for mounting the POH range of post holders. The base has an M6 clearance hole, to allow post holders to be attached by M6 soc cap screws.

All bases are compatible with Imperial or Metric optical tables and are machined specifically for stable mounting.

Specifications

Dimensions 50 x 76 x 9.2 mm

Component Mounting: ½" Posts, Holders & Bases: Bases

BAS101 Pedestal Base Adaptor



- Pedestal base adaptor to convert the POP range of 1" pillar posts to 1" pedestal pillar posts
- Can also be used to convert the POH post holders into pedestal style allowing the use of TCL clamping forks

From our range of 1" stainless steel pillar posts for general mounting of applications.



Pedestal base adapter to convert the POP range of 1" pillar posts to 1" pedestal pillar posts. Can also be used to convert the POH post holders into pedestal style allowing the use of TCL clamping forks.

Component Mounting: ½" Posts, Holders & Bases: Bases

KFM101 Flip Mount



- Tapped M4 for component mounting
- M6 counterbore mounting hole
- Compact design, only 12.7 mm thick
- Ball on hard pad indexing
- Repeatedly returns to the same position
- Designed to mount on the POP and PPP series of 1" posts



The KFM101 is a kinematic flip mount designed to move optics from the beam path and return them repeatedly to the same position.

Component Mounting: ½" Posts, Holders & Bases: Bases

BKA301 Kinematic Magnetic Base Assembly



- Accurate & repeatable placement
- Array of M4 & M6 mounting holes
- Ergonomic design



The BK range of kinematic bases provide a removable and replaceable platform for mounting of optical components. Hardened steel balls locate in kinematic slots on the base providing accurate, repeatable placement. The plate is held in place by 4 high strength magnets.

The finger friendly design of the 75 x 75 x 25 mm (3 x 3 x 1 inch) base features rounded edges and cut-outs to allow the top to be easily removed and replaced without trapping fingers.

Mounting is by either a central M6 (¼-80) counterbored clearance hole or by parallel slots. The top plate has an array of both M6 and M4 holes for mounting the full range of posts, post holders and optical component mounts.

Accessories

Additional BKT301 top plates and BKB301 bases are available separately.

Component Mounting: ½" Posts, Holders & Bases: Bases

BKT301 Kinematic Magnetic Base Top Plate



- Easy and repeatable swapping
- Array of M4 & M6 mounting holes



BKT301 is a 75 x 75 mm (3 x 3") top plate for use in conjunction with the BKB301 base plate. Together they make up the BKA301 kinematic base assembly.

This top plate is available separately to facilitate easy and repeatable swapping of two or more components in a beam path.

The top plate has an array of both M6 and M4 holes for mounting the full range of posts, post holders and optical component mounts.

Accessories

Additional BKB301 bases are available separately.

Component Mounting: ½" Posts, Holders & Bases: Bases

BKB301 Kinematic Magnetic Base Bottom Plate



- Easy and repeatable swapping
- Central M6 (¼"-80) clearance hole
- Parallel clearance slots



The BKB301 is a 75 x 75 mm (3 x 3") bottom plate for use in conjunction with the BKT301 top plate. Together they make up the BKA301 kinematic magnetic base assembly.

This bottom plate is available separately to facilitate easy and repeatable positioning of a mounted component in different positions in a single beam path or separate experimental set-up.

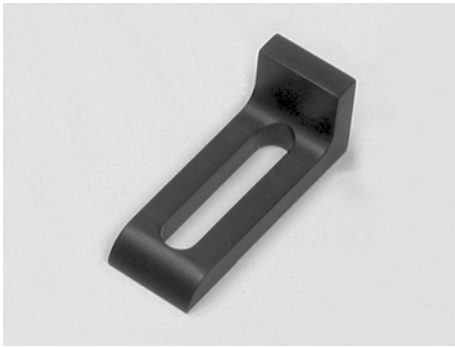
The base can be mounted by either a central M6 (¼"-80) clearance hole or parallel clearance slots.

Accessories

Additional BKT301 top plates are available separately.

Component Mounting: Table Clamps and Table Clamping Forks

TCL001 Table Clamp



- Imperial or Metric compatible
- Used when a base is not near suitable holes on an optical table

Table clamps are used for holding the BAS range of bases when suitable holes are not available on the optical table. They are imperial or metric compatible.

Specifications

Size 18 x 19 x 50 mm

Accessories

1" Pillar Posts
1" Pedestal Posts
Bases
Posts
Post Holders

Component Mounting: Table Clamps and Table Clamping Forks

TCL002 Compact, Variable Height Table Clamp



- Imperial or Metric compatible
- Used when a base is not near suitable holes on an optical table

Table clamps are used for holding the BAS range of bases when suitable holes are not available on the optical table.

The TCL002 has an M6 screw thread and a clearance slot to accept either an M6 or ¼"-20 bolt, so they are imperial or metric compatible.

Specifications

Size 12.6 x 10 x 50 mm

Accessories

1" Pillar Posts
1" Pedestal Posts
Bases
Posts
Post Holders

Fixed Holders

2018



Component Mounting: Fixed Holders: Lens Mounts

OLM050 ½" (12.7 mm) Lens Mount

- Holds ½" (12.7 mm) diameter optics up to 5 mm thick
- M4 post mounting hole



The lens is held in place by a threaded retaining ring. One retaining ring is included with each mount and additional retaining rings can be ordered separately as part code ORR050. The mount has a flat mating surface with M4 threaded mounting hole for post mounting.

Specifications

| | |
|----------------|---------|
| Beam height | 15 mm |
| Clear aperture | 11.5 mm |

Component Mounting: Fixed Holders: Lens Mounts

OLM100 1" (25.4 mm) Lens Mount



- Holds 1" (25.4 mm) diameter optics up to .75 mm thick
- M4 post mounting hole

The lens is held in place by a threaded retaining ring. One retaining ring is included with each mount and additional retaining rings can be ordered separately as part code ORR100. The mount has a flat mating surface with M4 threaded mounting hole for post mounting.

Specifications

| | |
|----------------|-------|
| Beam height | 22 mm |
| Clear aperture | 24 mm |

Component Mounting: Fixed Holders: Lens Mounts

OLM200 2" (50.8 mm) Lens Mount



- Holds 2" (50.8 mm) diameter optics up to 7.5 mm thick
- M4 post mounting hole

The lens is held in place by a threaded retaining ring. One retaining ring is included with each mount and additional retaining rings can be ordered separately as part code ORR200. The mount has a flat mating surface with M4 threaded mounting hole for post mounting.

Specifications

| | |
|----------------|-------|
| Beam height | 35 mm |
| Clear aperture | 48 mm |

Component Mounting: Fixed Holders: Lens Mounts

OLM300 3" (76.2 mm) Lens Mount



- Holds ½" (12.7 mm) diameter optics up to 9 mm thick
- M4 post mounting hole

The lens is held in place by a threaded retaining ring. One retaining ring is included with each mount and additional retaining rings can be ordered separately as part code ORR300. The mount has a flat mating surface with M4 threaded mounting hole for post mounting.

Specifications

| | |
|----------------|-------|
| Beam height | 50 mm |
| Clear aperture | 72 mm |

Component Mounting: Fixed Holders: Lens Mounts

ORR050 ½" Lens Retaining Ring



- Threaded retaining ring
- Fits OLM050 ½" lens mount



Component Mounting: Fixed Holders: Lens Mounts

ORR100 1" Lens Retaining Ring

- Threaded retaining ring
- Fits OLM100 1" lens mount



Component Mounting: Fixed Holders: Lens Mounts

ORR200 2" Lens Retaining Ring



- Threaded retaining ring
- Fits OLM200 2" lens mount

Component Mounting: Fixed Holders: Lens Mounts

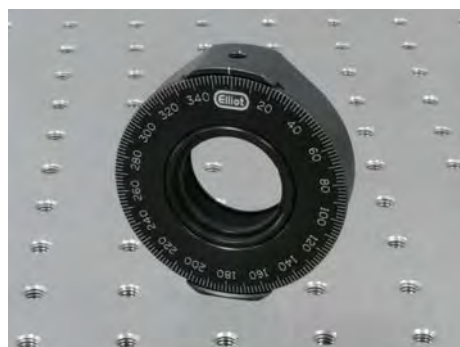
ORR300 3" Lens Retaining Ring



- Threaded retaining ring
- Fits OLM300 3" lens mount

Component Mounting: Fixed Holders: Rotation Mount

ROT011 1" Rotation Mount



- Post mountable rotation mount
- Lockable 360° continuous rotation
- Holds 1" (25.4 mm) diameter optics up to 11.4 mm thick

The ROT011 rotation mount provides a simple method of post mounting 1" (25.4 mm) diameter linear polarisers and waveplates. The mount utilises a pair of precision thrust bearings to give smooth continuous 360° rotation that can be locked at the desired angle.

The optic is held in place by a threaded retaining ring and one is included with each mount. Additional ORR100 retaining rings are available separately.

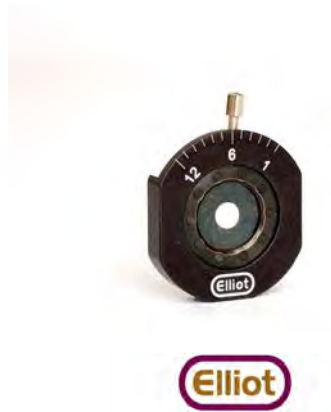
The mount has a flat mating surface with M4 threaded hole for post mounting.

Specifications

| | |
|-----------------|---------------------|
| Optic Size | 1" (25 mm) diameter |
| Optic thickness | 11.4 mm |
| Rotation range | 360° |
| Graduations | 2° |
| Sensitivity | 1° |
| Beam height | 27.8 mm |
| Clear aperture | 23 mm |
| Mount height | 56 mm |
| Mount thickness | 15 mm |

Component Mounting: Fixed Holders: Iris Diaphragms

MID012 12 mm Iris Diaphragm



- Laser engraved scale
- Post mountable iris diaphragm
- Continuously variable aperture

The MID012 post mountable iris diaphragm provides a continuously variable aperture up to 12 mm. The aperture is lever operated with the nominal aperture size being indicated by a laser engraved scale. It is supplied with a fixed M4 stud for mounting to the POP, POS or PPP ranges of posts.

Specifications

| | |
|---------------------|------------|
| Maximum aperture | 12 mm (½") |
| Minimum aperture | 1 mm |
| Optical axis height | 14.5 mm |

Component Mounting: Fixed Holders: Iris Diaphragms

MID025 25 mm Iris Diaphragm



- Laser engraved scale
- Post mountable iris diaphragm
- Continuously variable aperture

The MID025 post mountable iris diaphragm provides a continuously variable aperture up to 25 mm. The aperture is lever operated with the nominal aperture size being indicated by a laser engraved scale. It is supplied with a fixed M4 stud for mounting to the POP, POS or PPP ranges of posts.

Specifications

| | |
|---------------------|------------|
| Maximum aperture | 25 mm (1") |
| Minimum aperture | 1 mm |
| Optical axis height | 23 mm |

Component Mounting: Fixed Holders: Iris Diaphragms

MID036 36 mm Iris Diaphragm



- Laser engraved scale
- Post mountable iris diaphragm
- Continuously variable aperture

The MID036 post mountable iris diaphragm provides a continuously variable aperture up to 36 mm. The aperture is lever operated with the nominal aperture size being indicated by a laser engraved scale. It is supplied with a fixed M4 stud for mounting to the POP, POS or PPP ranges of posts.

Specifications

| | |
|---------------------|-------------|
| Maximum aperture | 36 mm (1½") |
| Minimum aperture | 2 mm |
| Optical axis height | 29.5 mm |

Component Mounting: Fixed Holders: Iris Diaphragms

MID050 50 mm Iris Diaphragm



- Laser engraved scale
- Post mountable iris diaphragm
- Continuously variable aperture

The MID050 post mountable iris diaphragm provides a continuously variable aperture up to 50 mm. The aperture is lever operated with the nominal aperture size being indicated by a laser engraved scale. It is supplied with a fixed M4 stud for mounting to the POP, POS or PPP ranges of posts.

Specifications

| | |
|---------------------|------------|
| Maximum aperture | 50 mm (2") |
| Minimum aperture | 3.5 mm |
| Optical axis height | 39.5 mm |

Component Mounting: Fixed Holders: Fixed Mirror Holders

FMH050 ½" (12.7 mm) Fixed Mirror Holder



- Imperial and metric compatible
- Post mountable by M4 (#8-32) clearance hole

The FMH050 fixed mirror mount is designed for holding 0.5" (12.7 mm) diameter optics. The optic is held in place with a nylon tipped grub screw and the mount has a flat mating surface with M4 threaded hole for post mounting.

Specifications

| | |
|----------------|-------|
| Beam height | 15 mm |
| Clear aperture | 12 mm |

Component Mounting: Fixed Holders: Fixed Mirror Holders

FMH100 1" (25.4 mm) Fixed Mirror Holder



- Imperial and metric compatible
- Post mountable by M4 (#8-32) clearance hole

The FMH100 fixed mirror mount is designed for holding 1" (25.4 mm) diameter optics. The optic is held in place with a nylon tipped grub screw and the mount has a flat mating surface with M4 threaded hole for post mounting.

Specifications

| | |
|----------------|-------|
| Beam height | 22 mm |
| Clear aperture | 24 mm |

Component Mounting: Fixed Holders: Fixed Mirror Holders

FMH200 2" (50.8 mm) Fixed Mirror Holder



- Imperial and metric compatible
- Post mountable by M4 (#8-32) clearance hole

The FMH200 fixed mirror mount is designed for holding 2" (50.8 mm) diameter optics. The optic is held in place with a nylon tipped grub screw and the mount has a flat mating surface with M4 threaded hole for post mounting.

Specifications

| | |
|----------------|-------|
| Beam height | 35 mm |
| Clear aperture | 48 mm |

Component Mounting: Fixed Holders: Filter Holder

EFH001 Stackable Filter Holder



- Holds 2" (50 mm) square filters up to 4 mm thick
- Imperial and metric compatible
- Post mountable by M4 (#8-32) clearance hole
- Stackable

The EFH001 post mountable filter holder is ideal for holding square filters. The optic is held in place by two spring clips. The holders can be stacked together using the two through holes on the front (suitable for M4).

Index

| Model | Description | Page |
|--------------|---|-------------|
| BAS001 | One Sided Base | 447 |
| BAS002 | Two Sided Base | 448 |
| BAS003 | Twin slotted base | 449 |
| BAS101 | Pedestal Base Adaptor | 413 |
| BAS101 | Pedestal Base Adaptor | 450 |
| BKA301 | Kinematic Magnetic Base Assembly | 452 |
| BKB301 | Kinematic Magnetic Base Bottom Plate | 454 |
| BKT301 | Kinematic Magnetic Base Top Plate | 453 |
| E901 | High Precision L/H 25 mm (1") Mirror Mount | 387 |
| E902 | High Precision R/H 25 mm (1") Mirror Mount | 388 |
| E911 | Adjustable High Precision Mirror Mount Frame with 1" Optic Holder | 379 |
| E912 | Adjustable High Precision Mirror Mount Frame with 2" Optic Holder | 380 |
| E913 | Adjustable High Precision Mirror Mount Frame with 3" Optic Holder | 381 |
| E914 | Adjustable High Precision Mirror Mount Frame with 4" Optic Holder | 382 |
| EFH001 | Stackable Filter Holder | 475 |
| EFP911 | Interchangeable 1" (25 mm) Front Plate Optic Holder | 383 |
| EFP912 | Interchangeable 2" (50 mm) Front Plate Optic Holder | 384 |
| EFP913 | Interchangeable 3" (75 mm) Front Plate Optic Holder | 385 |
| EFP914 | Interchangeable 4" (100 mm) Front Plate Optic Holder | 386 |
| EPC002 | End Post Clamp | 444 |
| ESP003 | 3 mm Spacer for 1" Posts | 418 |
| ESP005 | 5 mm Spacer for 1" Posts | 419 |
| ESP007 | 7 mm Spacer for 1" Posts | 420 |
| ESP009 | 9 mm Spacer for 1" Posts | 421 |
| FMH050 | ½" (12.7 mm) Fixed Mirror Holder | 472 |
| FMH100 | 1" (25.4 mm) Fixed Mirror Holder | 473 |
| FMH200 | 2" (50.8 mm) Fixed Mirror Holder | 474 |
| KCL121 | Kinematic Cylindrical Lens Mount | 396 |
| KFM101 | Flip Mount | 451 |
| KMF121 | Kinematic Mount Frame | 397 |
| KML031 | ½" (12.5 mm) Locking Kinematic Mirror Mount | 393 |
| KML131 | 1" (25 mm) Locking Kinematic Mirror Mount | 394 |
| KML231 | 2" (50 mm) Locking Kinematic Mirror Mount | 395 |
| KMO121 | Kinematic Objective Mount | 398 |
| KMP021 | Standard ½" (12.5 mm) Kinematic Mirror Mount | 390 |
| KMP121 | Standard 1" (25 mm) Kinematic Mirror Mount | 391 |
| KNA121 | Plain Kinematic Mount | 399 |
| KPH121 | Kinematic Platform Mount | 400 |
| KPV121 | Kinematic Prism Table | 401 |

| | | |
|--------|---|-----|
| KTA121 | Three Axis 1" Kinematic Mount | 402 |
| KTO121 | 1" Threaded Kinematic Mirror Mount | 392 |
| MDE320 | 25 mm (1") Ultra-fine Kinematic Mirror Mount | 389 |
| MID012 | 12 mm Iris Diaphragm | 468 |
| MID025 | 25 mm Iris Diaphragm | 469 |
| MID036 | 36 mm Iris Diaphragm | 470 |
| MID050 | 50 mm Iris Diaphragm | 471 |
| OLM050 | ½" (12.7 mm) Lens Mount | 459 |
| OLM100 | 1" (25.4 mm) Lens Mount | 460 |
| OLM200 | 2" (50.8 mm) Lens Mount | 461 |
| OLM300 | 3" (76.2 mm) Lens Mount | 462 |
| OPC410 | 1" Post Clamp for M4 Components | 422 |
| OPC610 | 1" Post Clamp for M6 Components | 423 |
| ORR050 | ½" Lens Retaining Ring | 463 |
| ORR100 | 1" Lens Retaining Ring | 464 |
| ORR200 | 2" Lens Retaining Ring | 465 |
| ORR300 | 3" Lens Retaining Ring | 466 |
| POH025 | 25 mm long Holder for ½" diameter Posts | 438 |
| POH040 | 40 mm long Holder for ½" diameter Posts | 439 |
| POH050 | 50 mm long Holder for ½" diameter Posts | 440 |
| POH075 | 75 mm long Holder for ½" diameter Posts | 441 |
| POH100 | 100 mm long Holder for ½" diameter Posts | 442 |
| POH150 | 150 mm long Holder for ½" diameter Posts | 443 |
| POP012 | 12.5 mm long, 1" diameter Stainless Steel Pillar Post | 407 |
| POP025 | 25 mm long, 1" diameter Stainless Steel Pillar Post | 408 |
| POP050 | 50 mm long, 1" diameter Stainless Steel Pillar Post | 409 |
| POP075 | 75 mm long, 1" diameter Stainless Steel Pillar Post | 410 |
| POP100 | 100 mm long, 1" diameter Stainless Steel Pillar Post | 411 |
| POP150 | 150 mm long, 1" diameter Stainless Steel Pillar Post | 412 |
| POS020 | 20 mm long, ½" diameter Stainless Steel Post | 428 |
| POS030 | 30 mm long, ½" diameter Stainless Steel Post | 429 |
| POS040 | 40 mm long, ½" diameter Stainless Steel Post | 430 |
| POS050 | 50 mm long, ½" diameter Stainless Steel Post | 431 |
| POS075 | 75 mm long, ½" diameter Stainless Steel Post | 432 |
| POS100 | 100 mm long, ½" diameter Stainless Steel Post | 433 |
| POS150 | 150 mm long, ½" diameter Stainless Steel Post | 434 |
| POS200 | 200 mm long, ½" diameter Stainless Steel Post | 435 |
| POS250 | 250 mm long, ½" diameter Stainless Steel Post | 436 |
| POS300 | 300 mm long, ½" diameter Stainless Steel Post | 437 |

| | | |
|--------|---|-----|
| PPP025 | 25 mm long, 1" diameter Stainless Steel Pedestal Pillar Post | 414 |
| PPP050 | 50 mm long, 1" diameter Stainless Steel Pedestal Pillar Post | 415 |
| PPP075 | 75 mm long, 1" diameter Stainless Steel Pedestal Pillar Post | 416 |
| PPP100 | 100 mm long, 1" diameter Stainless Steel Pedestal Pillar Post | 417 |
| ROT011 | 1" Rotation Mount | 467 |
| TCL001 | Table Clamp | 455 |
| TCL002 | Compact, Variable Height Table Clamp | 456 |
| TCL011 | Short Fork Table Clamp | 424 |
| TCL012 | Long Fork Table Clamp | 425 |
| THS001 | Spring Loaded Thumbscrew | 445 |
| THS002 | Thumbscrew | 446 |

International Distributors

Europe & Middle East

France

Optoprim

21-23 rue Aristide Briand
92170 Vanves

Tel: +33 (0)141 90 61 80
Fax: +33 (0)141 90 61 89
Web: www.optoprim.com
Email: info@optoprim.com

Opton Laser International

Parc Club Orsay Université
29, rue Jean Rostand
91893 Orsay Cedex

Tel: +33 (0)169 41 04 05
Fax: +33 (0)169 41 32 90
Web: www.optonlaser.com
Email: ventes@optonlaser.com

Germany

Mountain Photonics GmbH

Albert-Einstein-Str. 18
D-86899 Landsberg am Lech

Tel: +49 0 8191 985199 0
Fax: +49 0 8191 985199 99
Web: www.mphotronics.de
Email: info@mphotronics.de

Israel

Rosh Electroptics

P.O.B 2667
Netanya 4212601

Tel: +972 9862 7401
Fax: +972 9861 6185
Web: www.roshelop.co.il
Email: info@roshelop.co.il

Italy

dB Electronic Instruments S.r.l.

Via Teano, 2
20161 Milano

Tel: +39 02 64 69 341
Fax: +39 02 64 56 632
Web: www.db-electronic.it
Email: sales@dblaser.it

Spain

Laser Technology S.L

Calle Mestral, 1 - 13, Local 8
08340 Vilassar de Mar
Barcelona

Tel: +34 93 750 0121
Tel: +34 93 750 0323
Web: www.laser-technology.com
Email: info@laser-technology.com

North America

USA

Lightspeed Technologies Inc.

P.O. Box 110161
Campbell
CA 95011-0161

Tel: +1 408 761 0062
Fax: +1 408 378 3629
Web: www.light-speed-tech.com
Email: sales@light-speed-tech.com

Asia

China

Standard Components

ETSC Technologies

14 / F, Block B4, Overseas Talent Building
Wuhan Science and Technology City
999, High-tech Avenue, Donghu Development Zone
Wuhan City
Hubei

Tel: +86 27 87807177
Fax: +86 27 87807133
Web: www.etsc-tech.com
Email: huiwinw@etsc-tech.com

China

Optical Tweezers

Worldwide Technology (S.H) Co.,Ltd.

WAD (H.K) Co.,Ltd.
Room 1026, Area B, Wisdom Bay Creative Garden
No.6, Chuan Chuan Road
Baoshan District
Shanghai

Tel: +86 21 66621556/7/8/9
Fax: +86 21 66621556/7/8/9*8048
Web: www.worldwide-china.com
Email: sales@worldwide-china.com

Continued overleaf

India**Aimil Ltd.**

Naimex House
A-8, Mohan Cooperative Industrial Estate
Mathura Road
New Delhi - 110 044

Tel: +91 11 30810200
Fax: +91 11 26950011
Web: www.aimil.com
Email: info@aimil.com

Japan**Autex Inc.**

Takasago Bld 4F
16-5 Tomihisa-Cho
Shinjuku-Ku
Tokyo
162-0067

Tel: +81 3 3226 6321
Fax: +81 3 3226 6290
Web: www.autex-inc.co.jp
Email: sales31@autex-inc.co.jp

Korea**MMT Co., Ltd (Micro Motion Technology)**

173-282, Gajwa-Dong
Seo-Gu
Incheon
404-250

Tel: +82 32 710 8800
Fax: +82 32 710 8810
Web: www.micromt.com
Email: mmt@micromt.com

Singapore**Precision Technologies Pte Ltd**

211 Henderson Road
#13-02 Henderson Industrial Park
159552

Tel: +65 6273 4573
Fax: +65 6273 8898
Web: www.pretech.com.sg
Email: comms2@pretech.com.sg

Taiwan**Unice E-O Service Inc.**

No.5, Andong Road
Chung Li Industrial Park
Chung Li City
Taoyuan County 32063

Tel: +886 3 462 6569
Fax: +886 3 462 5586
Web: www.unice.com.tw
Email: unicehq@unice.com.tw

Issued: December 2018