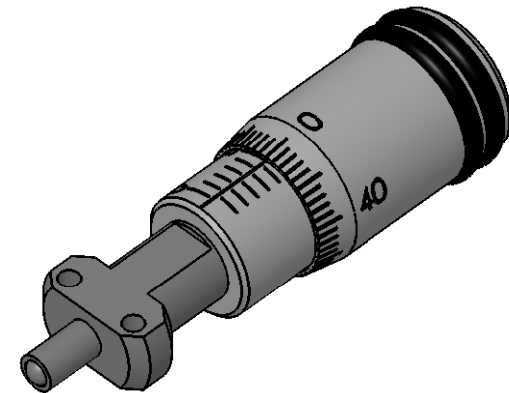
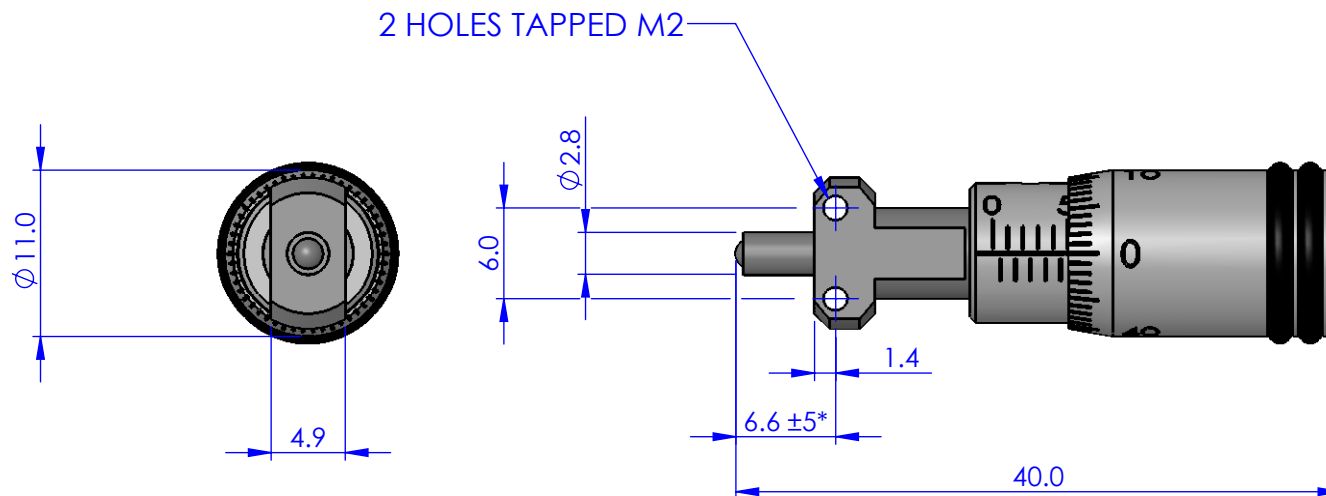


	REVISIONS			
REV.	DESCRIPTION		DATE	APPROVED



GENERAL VIEW



\*MDE219 HAS  $\pm 5\text{mm}$  OF TRAVEL FROM POSITION SHOWN.  
SCREW PITCH IS 0.5 SO ONE COMPLETE TURN GIVES  
0.5mm OF TRAVEL AT  $10\mu\text{m}$  PER DIVISION

PROPRIETARY AND CONFIDENTIAL  
COPYRIGHT ELLIOT SCIENTIFIC Ltd.  
THE INFORMATION CONTAINED IN THIS  
DRAWING IS THE SOLE PROPERTY OF  
ELLIOT SCIENTIFIC LTD. REPRODUCTION  
IN PART OR AS A WHOLE WITHOUT WRITTEN  
PERMISSION IS PROHIBITED.

DIMENSIONS ARE IN mm  
GENERAL TOLERANCES:  $\pm 0.1$   
ANGULAR TOLERANCES:  $\pm$   
SURFACE FINISH:  
ALL BURRS, SHARP EDGES  
AND CORNERS TO BE  
REMOVED

NAME		DATE
AUTHOR	GW	22/04/2008
CHECKED	--	--
MATERIAL		
ALUM. ALLOY, NICKEL		
SILVER, STAINLESS STEEL		
FINISH		
--		
DO NOT SCALE DRAWING		

<b>Elliot Scientific</b>	
<b>TITLE</b> <b><math>\pm 5\text{mm}</math> TRAVEL MICROMETER</b>	
<b>SIZE</b> <b>A4</b>	<b>DWG. NO.</b> <b>MDE219</b>
SCALE:2:1	THIRD ANGLE PROJECTION
SHEET 1 OF 1	