

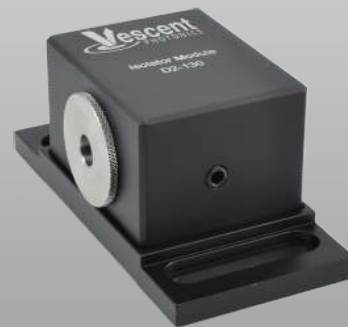
# D2-120 Fiber-Coupling Module

## D2-130 Isolator Module

The D2-120 is designed to facilitate coupling of a laser beam into either a single or multimode optical fiber. The module incorporates an optical isolator, prior to the fiber facet to reduce optical feedback. An FC fiber receptacle is provided with an aspheric AR-coated condensing lens and six degrees of freedom for alignment optimization: 3 linear (x, y, z), 2 angular (azimuth, elevation), and 1 rotational (for PM fibers). The incoming beam height matches other D2 series lasers and optical modules.



*D2-120 Fiber-Coupling Module*



*D2-130 Isolator Module*

The D2-130 isolator module contains a 35 dB isolator and 1/2-waveplate in a rugged and compact package. The beam height matches other D2-series modules. The D2-130 can be used whenever extra isolation is desired, such as added isolation prior to fiber coupling.

### Features:

- Easily couple light into single mode (PM or SM) or multimode fiber
- $\geq 30$  dB of isolation
- Rotatable waveplate precisely aligns polarization with fiber axis (PM)
- Beam height matches D2-100 Laser



# D2-120 & D2-130

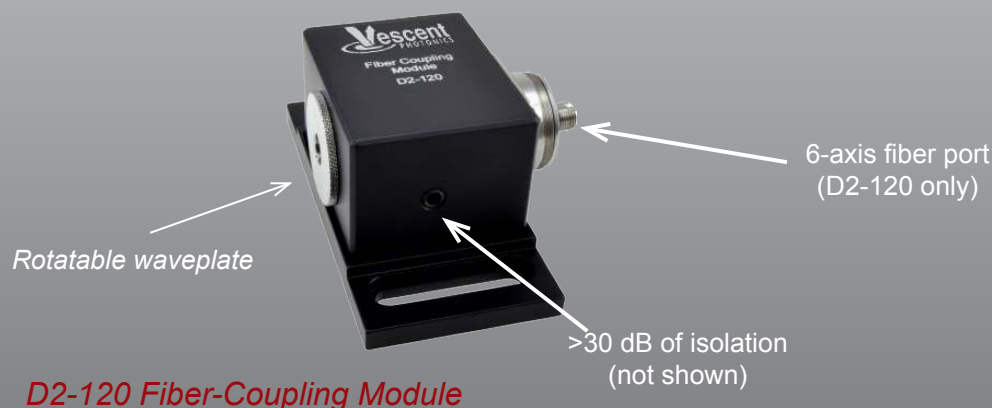
## Performance Specifications

Performance <sup>1</sup>	
Wavelength	760, 767, 770, 780, 785, 795, 808, 838, 852, 895, 935, 1064, 1083, 1092 nm
Isolation <sup>2</sup>	>30 dB
Fiber-Coupling Efficiency <sup>3</sup> of D2-120	>50% typical

<sup>1</sup>All specifications subject to change without notice.

<sup>2</sup>Except D2-120-NI which has no isolator.

<sup>3</sup>With D2-100. Lasers with low  $M^2$  will couple more efficiently than those with higher  $M^2$ .



Designed to integrate with D2-100. Also works easily with third-party lasers.

**Elliot Scientific Limited**  
 Unit 11 Sandridge Park,  
 Porters Wood, St Albans,  
 AL3 6PH, United Kingdom  
 Tel: +44 (0)1582 766300  
 Fax: +44 (0)1582 766340  
[www.elliotscientific.com](http://www.elliotscientific.com)  
[sales@elliotscientific.com](mailto:sales@elliotscientific.com)

