

CURIOSIS



MSP™-320

Streamline your slide digitization process
with our advanced digital slide scanner



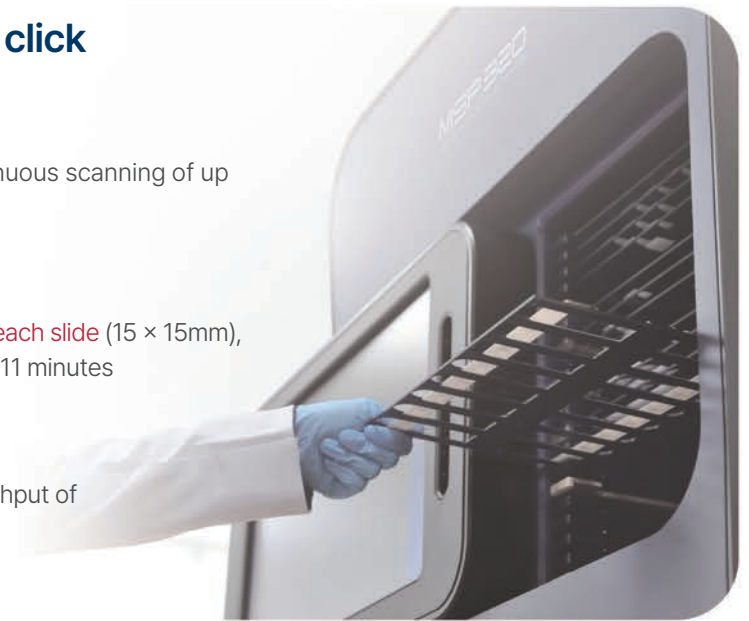
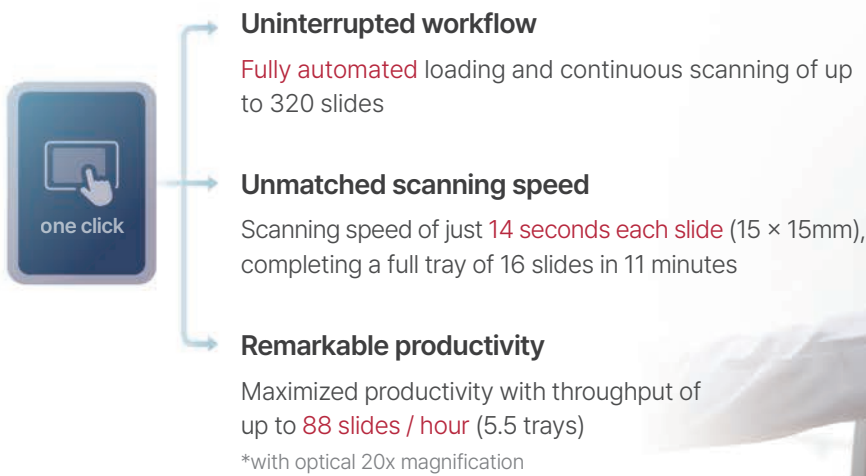
reddot winner 2024
best of the best



Automated digital slide scanner

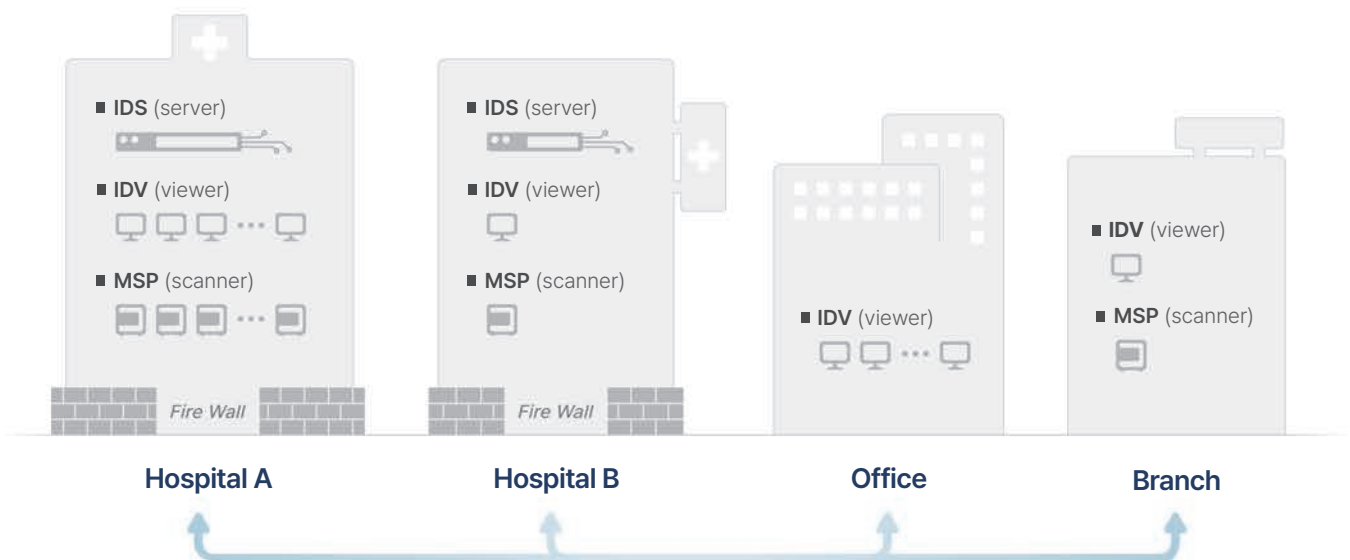
The **MSP™-320** revolutionizes pathology workflows by providing seamless access to digital slide images, empowering pathologists to review cases remotely and efficiently reduce the turnaround time. It ensures the secure data storage, archiving, and easy retrieval of high-quality digital images, overcoming the limitations associated with slide degradation while preserving valuable specimens. **MSP™-320** also offers potential long-term cost savings by eliminating the need for physical slide storage, slide transportation, and associated logistical expenses. Moreover, it facilitates faster diagnoses and optimized treatment plans, leading to improved patient outcomes and cost efficiencies.

Scan and digitize 320 slides in one click



Improved accessibility while ensuring data security

While enhancing accessibility to data that help reduce turnaround time for diagnosis and increase user convenience, **MSP™-320** also offers secure data storage, transmission and access control system.



Guaranteed excellent image quality



High image resolution

MSP™-320 provides high-resolution images with **0.112 $\mu\text{m}/\text{pixel}$ (with 40x magnification)** enabling precise visualization of cellular structures for accurate diagnosis.



Advanced stitching algorithm

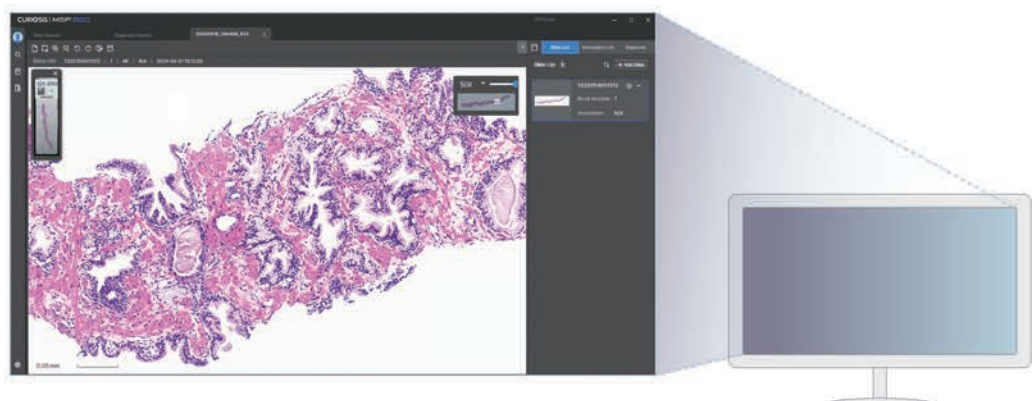
The advanced stitching technique allows rapid whole slide stitching while maintaining **exceptional clarity and detail**, even when zoomed into specific regions.

User-friendly features that optimize the user experience

Enhancing the user experience further is a **23-inch touchscreen** designed for intuitive operation and workflow efficiency. Users can easily navigate scans, review slides, and adjust settings with simple touch controls. Uniquely, the touchscreen also functions as the system's front door, combining practical **usability with smart space optimization**.



The MSP™-320's **integrated viewer (IDV)** provides an exceptionally user-friendly interface for seamless navigation and precise analysis of high-resolution digital slides. With up to **800x zoom and outstanding pixel-level clarity**, it supports accurate and detailed visualization, making it ideal for both research and diagnostic applications. Its interface—honored with the Red Dot: Best of the Best Award and iF Design Award—sets a new standard for usability in digital pathology.

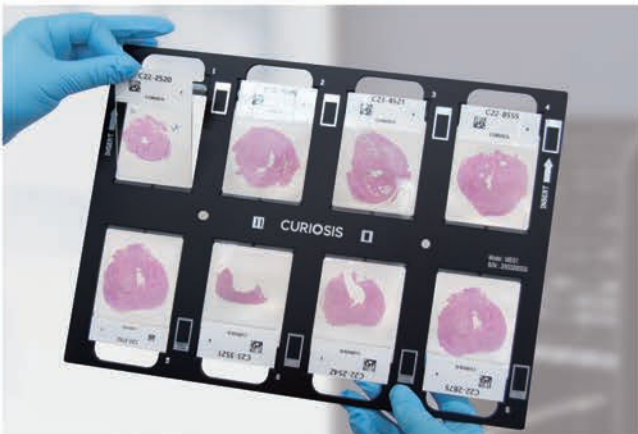


Streamlined workflow with patented tray design

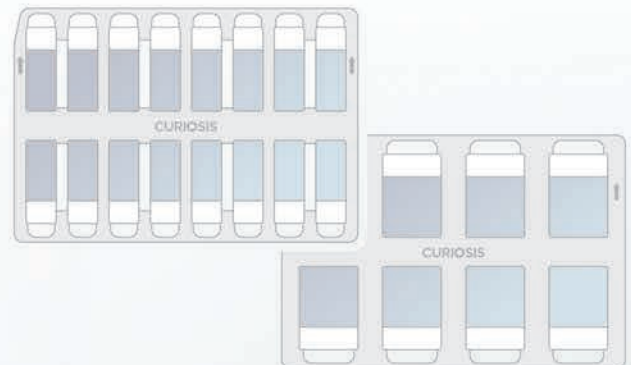
The patented A4-sized tray design is specifically engineered to **simplify slide detachment** and **significantly reduce overhead time**, streamlining both storage and handling. Transferring the whole tray instead of individual slides minimizes the risk of slide damage and enables the use of coverless and wet-mounted slides.



Our digital slide scanner supports **various slide sizes that customers need** including the mega-sized slides, providing greater flexibility for scanning different tissue samples. This adaptable scanning technology ensures seamless integration with existing laboratory protocols while **accommodating both standard and specialized slide preparations** across multiple research and clinical applications.



Various slide sizes



List of Awards



reddot winner 2024
best of the best



reddot winner 2024



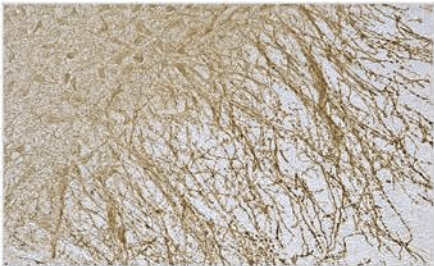
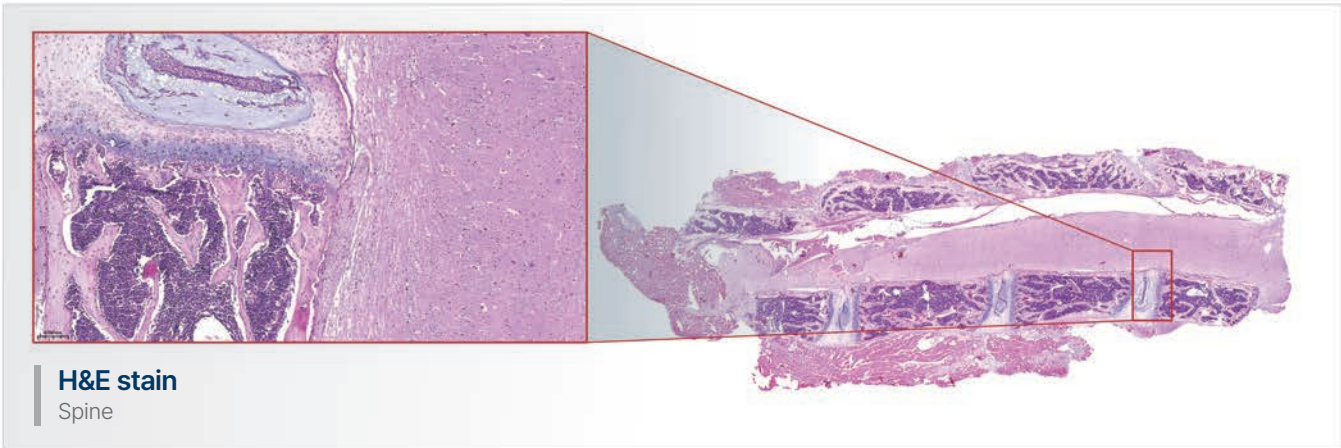
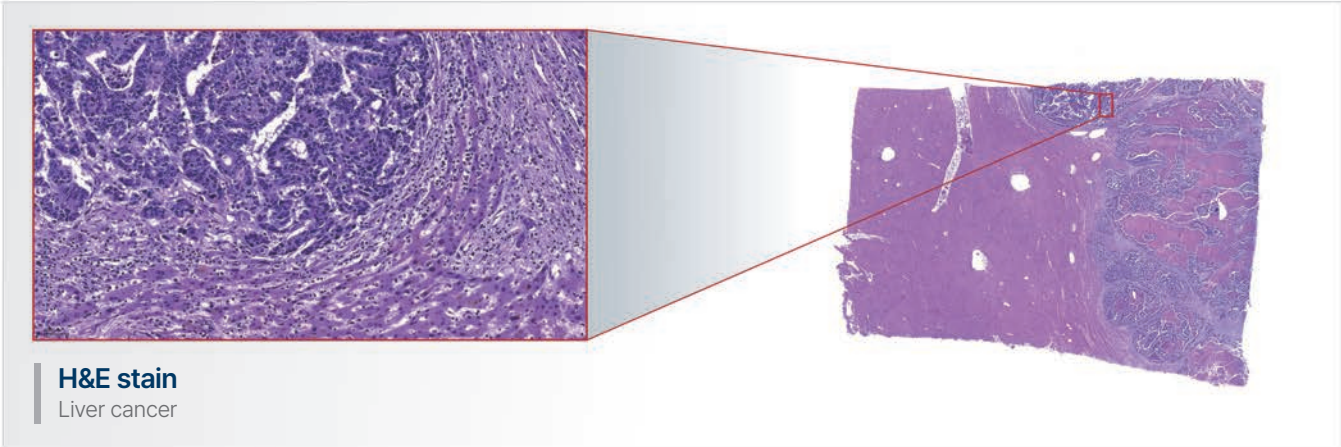
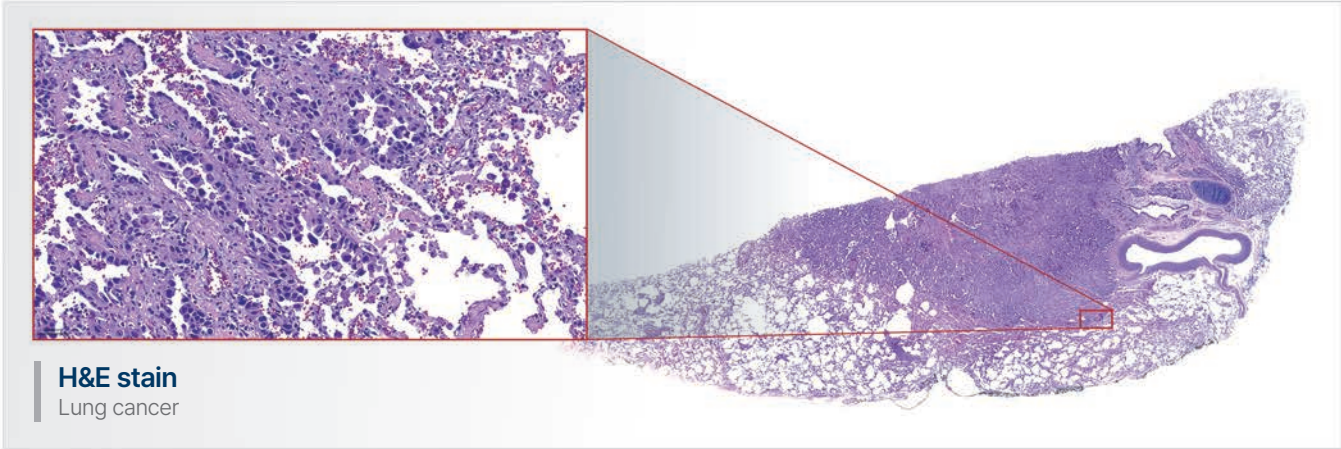
User Interface (UI)



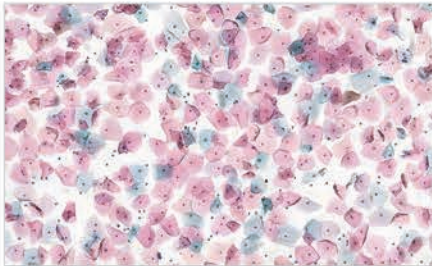
Product Design



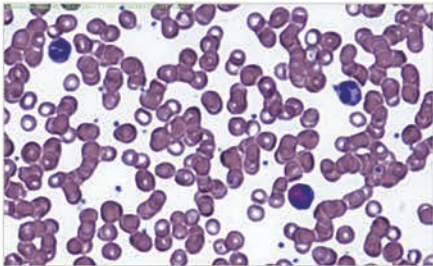
Slides scanned with MSP™-320



DAB stain
Brain



Papanicolaou stain
Pap smear



Giemsa stain
Blood

Specification

Slide capacity	320 slides	
Tray / slide capacity	20 trays x 16 slides	
Magnification	Optical 40x	Optical 20x
Scan speed (sec)	23 (15 × 15mm tissue)	14 (15 × 15mm tissue)
FOV (mm)	0.36 × 0.25 (single shot)	0.72 × 0.50 (single shot)
Resolution (µm/pixel)	0.112	0.225
Focus	Focus map	
Scan area (mm)	24 × 54 (max tissue size w/ standard tray) (44 × 54 w/ mega tray optional)	
Label area (mm)	25 × 15~20	
Slide size (min, max, mm)	24~25 × 74~76 (1" x 3") 50~52 × 74~76 (2" x 3", optional)	
Scan mode	Bright-field	
Continuous tray loading while scanning	Yes	
Priority tray scanning	Yes	
Touchscreen (cm)	52.1 × 29.3	
Dimension (cm)	82.5 × 72 × 91.5 (116 × 72 × 91.5, when door open)	
Weight (kg)	175	
Power supply	220~230V, 50/60 Hz	
Operating temperature	10~35°C	
Certifications	KFDA, KC, CE-LVD	



Elliot Scientific Ltd
 Unit 11 Sandridge Park, Porters
 Wood, St Albans,
 AL3 6PH, United Kingdom
 Tel: +44 (0)1582 766300
 Fax: +44 (0)1582 766340
www.elliottscientific.com
sales@elliottscientific.com



Curiosis Inc.

+82 2 508 5237 | sales@curiosis.com | South Korea

The system can be customized according to your facility's specific requirements.

Specifications, features, and user interface are subject to change without notice for product improvement.

CRB012-2306Rev05