

Prizmatix

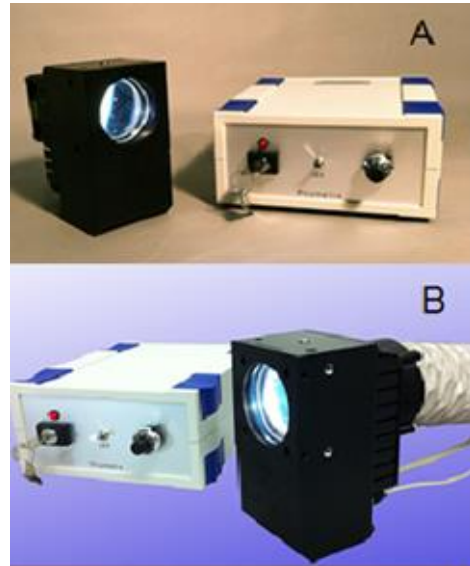
UHP-T2-LED-White

Ultra High Power LED Light Source for Fluorescence Microscopy

Ver. 04

Introduction

The Ultra High Power White LED (~50 Watt) light source features high CRI large chip LED technology. The high CRI provides broadband emission spectrum enabling usage of single light source for numerous fluorescent dyes with excitation spectrum from blue to red. The large LED chip provides exceptional flat field illumination favorable for general fluorescence microscopy and especially for quantitative imaging. The detached fan model (Fig B) is ideal for long illumination at vibration sensitive applications.



(A) Standard UHP-T2 model.

(B) Detached fan model*

* Optional features

Key Features

- Excellent field uniformity
- High CRI white spectrum
- Optically isolated TTL input for external triggering (no shutter needed) or strobe operation
- Analog Input for LED power control (0-5V)
- Stable precisely adjustable power by 10 turns dial
- Detached fan model for applications that require long illumination*
- Low noise driver for fast imaging applications *
- Computer control via USB and LabView software (optional)
- Long life (no lamp or laser tube replacement required)
- Rapid warm up time
- Compatible with most fluorescence microscope brands (Olympus, Nikon, Zeiss, Leica)

Applications

- Fluorescence microscopy
- Whole body imaging of small animals in-vivo
- Bio analysis
- Machine Vision
- OEM

Main Office

Phone: +972-72-2500097
Fax: +972-72-2500096
sales@prizmatix.com

European Sales Office

Phone: +44-(0)77-9172-9592
Fax: +44-(0)20-7681-2977
sales.europe@prizmatix.com

North America Sales Office

Phone: +1-(248)-436-8085 Fax:
+1-(248)-281-5236
sales.usa@prizmatix.com

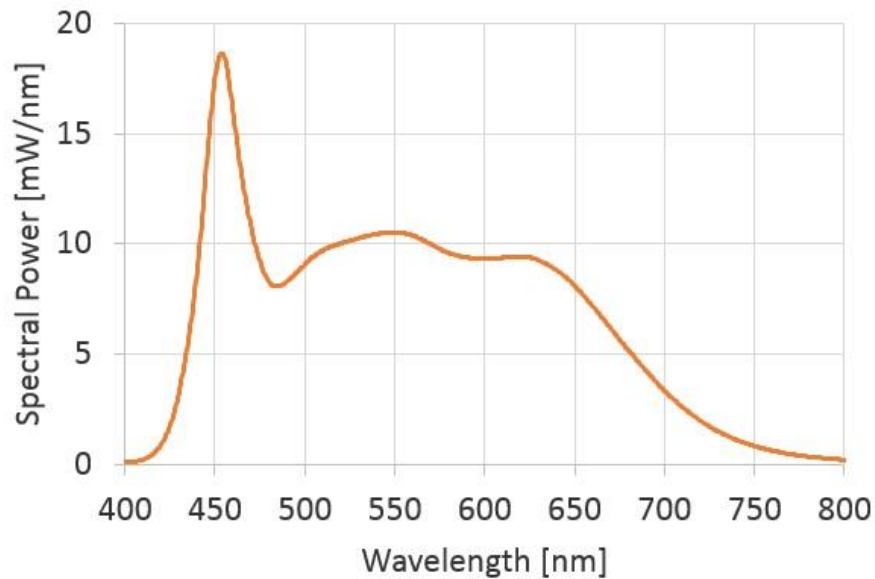
P.O.B. 244 Givat-Shmuel 54101, Israel

Prizmatix

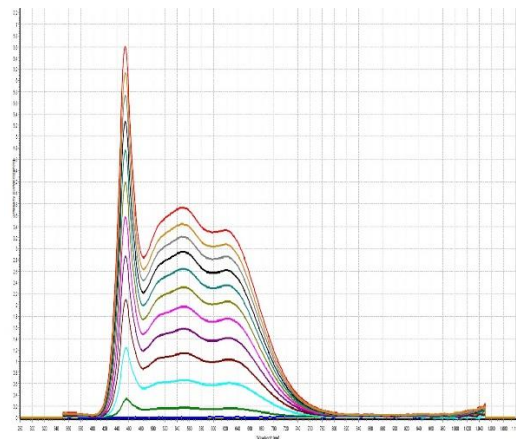
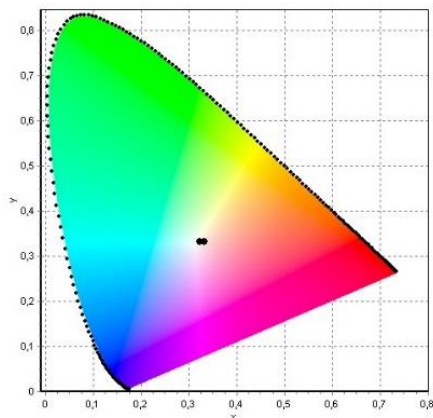
Optical Specifications*

| Wavelength | nm | See Spectrum for standard High CRI White* |
|---------------------------------|-------|---|
| Collimated optical power output | W | >2.5 |
| Collimated Flux output | lumen | 700 |
| Chromacity CIEx / CIEy | | 0.323 / 0.333 |
| Color Temperature | K | 5965 |
| CRI Ra | | 96.5 |

* The data is for High CRI, other LED color temperature are available upon request



UHP-T2-LED-White-Hi-CRI: Spectrum



UHP-T2-LED-White-Hi-CRI: CIE Chromaticity diagram (left), Output spectrum vs. current (right)

Main Office

Phone: +972-72-2500097
 Fax: +972-72-2500096
sales@prizmatix.com

European Sales Office

Phone: +44-(0)77-9172-9592
 Fax: +44-(0)20-7681-2977
sales.europe@prizmatix.com

North America Sales Office

Phone: +1-(248)-436-8085 Fax:
 +1-(248)-281-5236
sales.usa@prizmatix.com

P.O.B. 244 Givat-Shmuel 54101, Israel

Prizmatix

Bench top LED Current Controller Specifications

- Constant current or chopping modes
- Precise LED current setting by 10 turn dial
- TTL external trigger input
- Compact and robust enclosure



| | | |
|------------------------------|----|---------------------------|
| Digital modulation input | | Optically isolated TTL |
| Connector for TTL input | | BNC |
| Digital modulation frequency | Hz | DC-30000 |
| Rise / Fall time (10% - 90%) | µs | <10 |
| Connector for Analog input | | BNC |
| Analog modulation frequency | Hz | DC-100 |
| Input Voltage | V | 12 |
| Max Input current | A | 6.5 |
| Power Adaptor Input | | 85-264 VAC, 47-63Hz, 1.5A |

General Specifications

| | | |
|--|-------|-------------------|
| Operation temperature range | °C | 10 - 35 |
| Storage temperature range | °C | -10 - 55 |
| Operating relative humidity (Non condensing) | % | <90 |
| Head dimensions | | See drawing below |
| Head weight | g | 350 |
| Controller dimensions (L x W x H) | mm | 197 x 174 x 80 |
| Controller weight | g | 400 |
| Power adaptor dimensions (L x W x H) | mm | 175 x 72 x 35 |
| Power adaptor weight | g | 650 |
| Power Adaptor Safety | | |
| Head fan noise | dB(A) | 38 |

Main Office

Phone: +972-72-2500097
 Fax: +972-72-2500096
 sales@prizmatix.com

European Sales Office

Phone: +44-(0)77-9172-9592
 Fax: +44-(0)20-7681-2977
 sales.europe@prizmatix.com

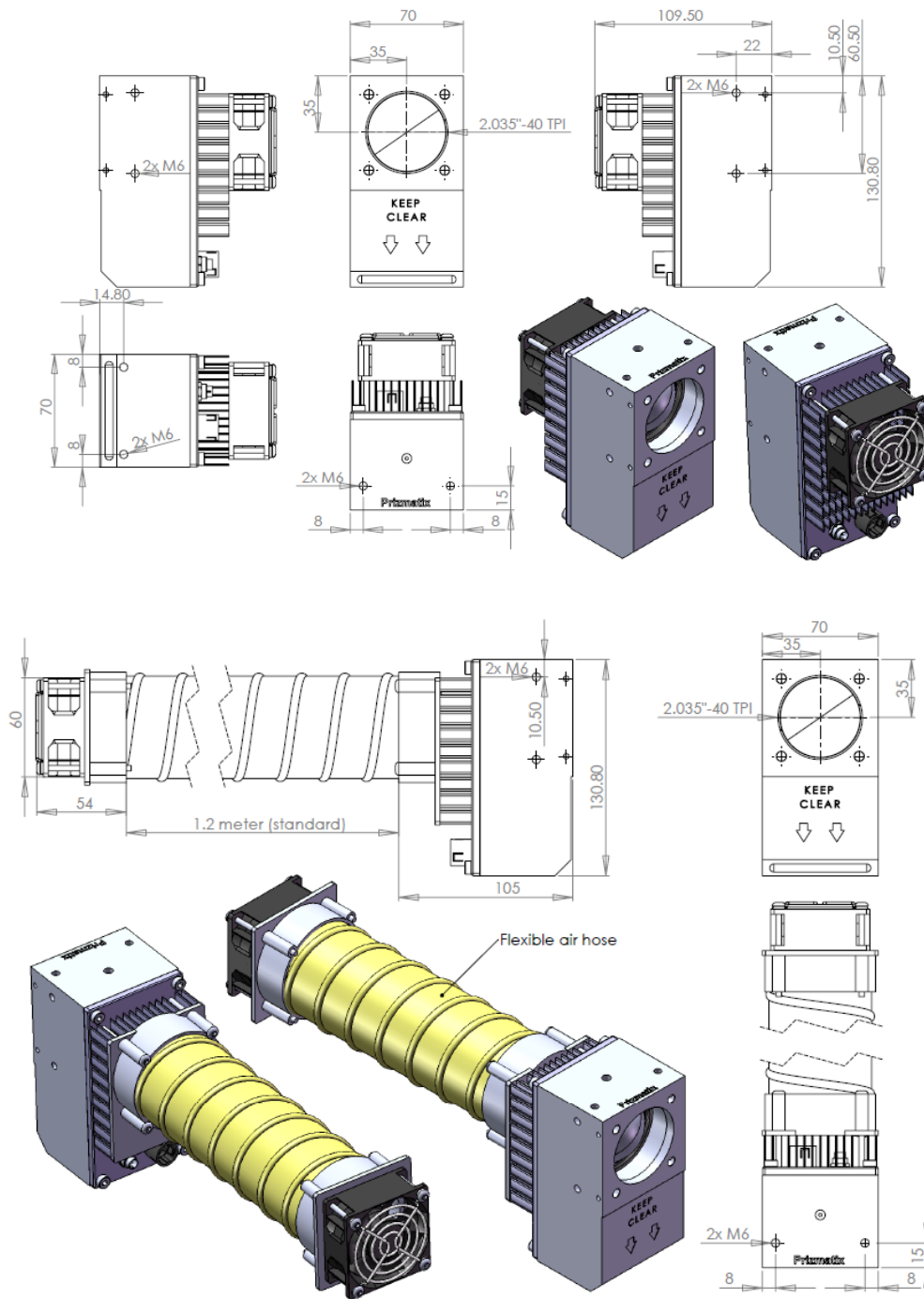
North America Sales Office

Phone: +1-(248)-436-8085 Fax:
 +1-(248)-281-5236
 sales.usa@prizmatix.com

P.O.B. 244 Givat-Shmuel 54101, Israel

Prizmatix

Mechanical Drawings



* Specifications subject to changes without notice

Main Office

Phone: +972-72-2500097
 Fax: +972-72-2500096
 sales@prizmatix.com

European Sales Office

Phone: +44-(0)77-9172-9592
 Fax: +44-(0)20-7681-2977
 sales.europe@prizmatix.com

North America Sales Office

Phone: +1-(248)-436-8085 Fax:
 +1-(248)-281-5236
 sales.usa@prizmatix.com

P.O.B. 244 Givat-Shmuel 54101, Israel