

# Flex

The Flex is a multi-channel patch clamp amplifier configurable from 8 to 96 channels. In order to address the various user needs, the Flex offers a wide range of customizable features.



## Standard Features

- Voltage Clamp
- Low Noise Integrated Digitizer
- Internal Head Stage per channel
- Internal Model Cell per channel
- USB interface
- TecellaLab software
- USB powered for 16 channels or less
- Power Adapter for > 16 channels
- 10.5" x 7.5" x 3.5"

## Flex Features (customizable):

- 8 to 96 channels (increments of 8)
- Whole Cell, Bilayer, or Electrochemistry models
- Current Clamp
- Command voltage range
- Command current range
- Gain values
- Series Resistance compensation range
- Capacitance compensation



Channels

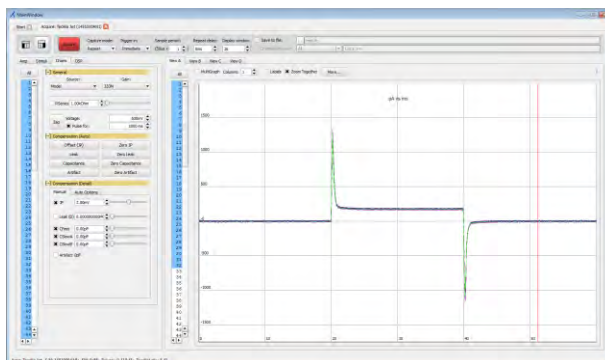
Switch



Power

USB

## TecellaLab Software



Power Adapter

## Flex Accessories

The following accessories are available to connect the Flex to the test head.

Flex cables are used to connect the Flex amplifier to the Terrapin electrode holders.

Electrode wires are inserted into the Terrapin electrode holder.

Terrapins are typically used in bilayer applications.

### Flex Cable (16 channels)

- Each cable can connect to 2 Terrapins
- Length: 12" (30cm)



### Terrapin1 Electrode Holder

- 8 channels
- Side entry
- 5.4cm x 4.9cm
- Connects via the Flex cable



### Terrapin2 Electrode Holder

- 8 channels
- Bottom entry
- 5.4cm x 4.9cm
- Connects via the Flex cable

